



State University  
of New York

# FASHION INSTITUTE OF TECHNOLOGY

Organizational Charts

# **FASHION INSTITUTE OF TECHNOLOGY ORGANIZATIONAL CHARTS**

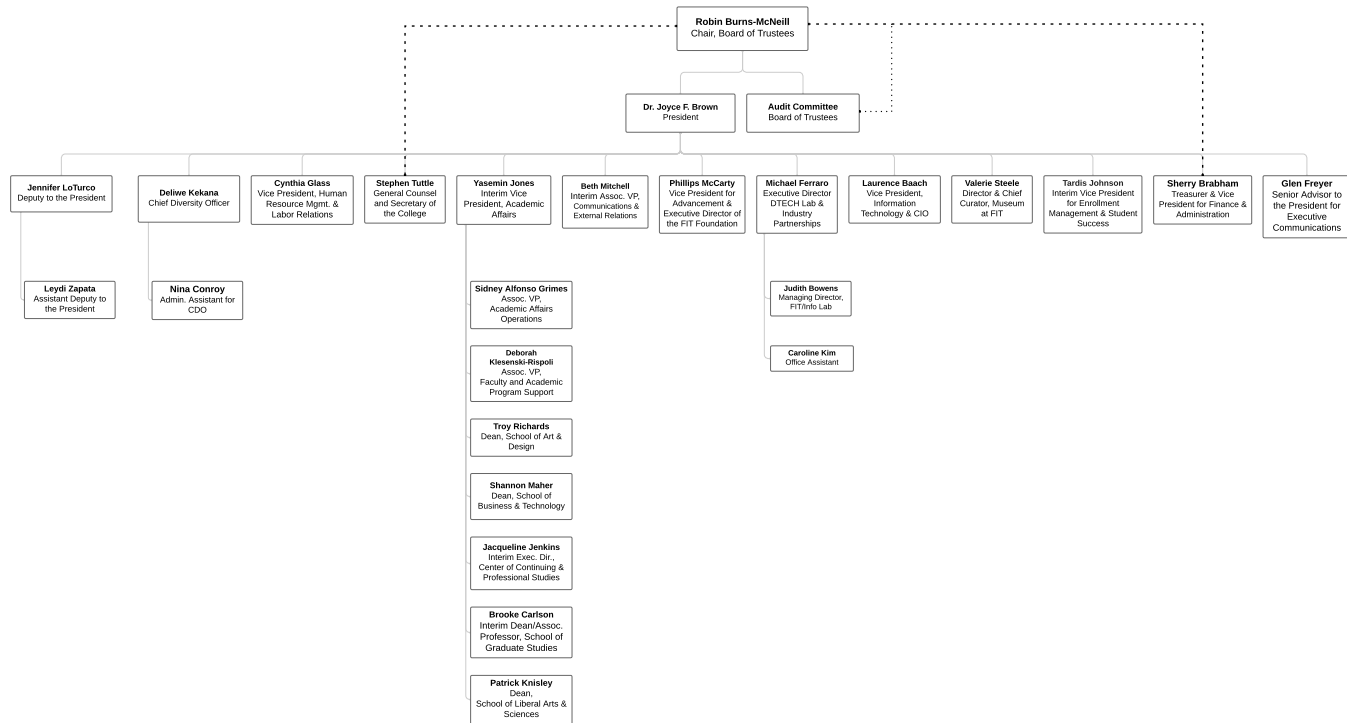
## **INSTRUCTIONS AND REVISIONS**

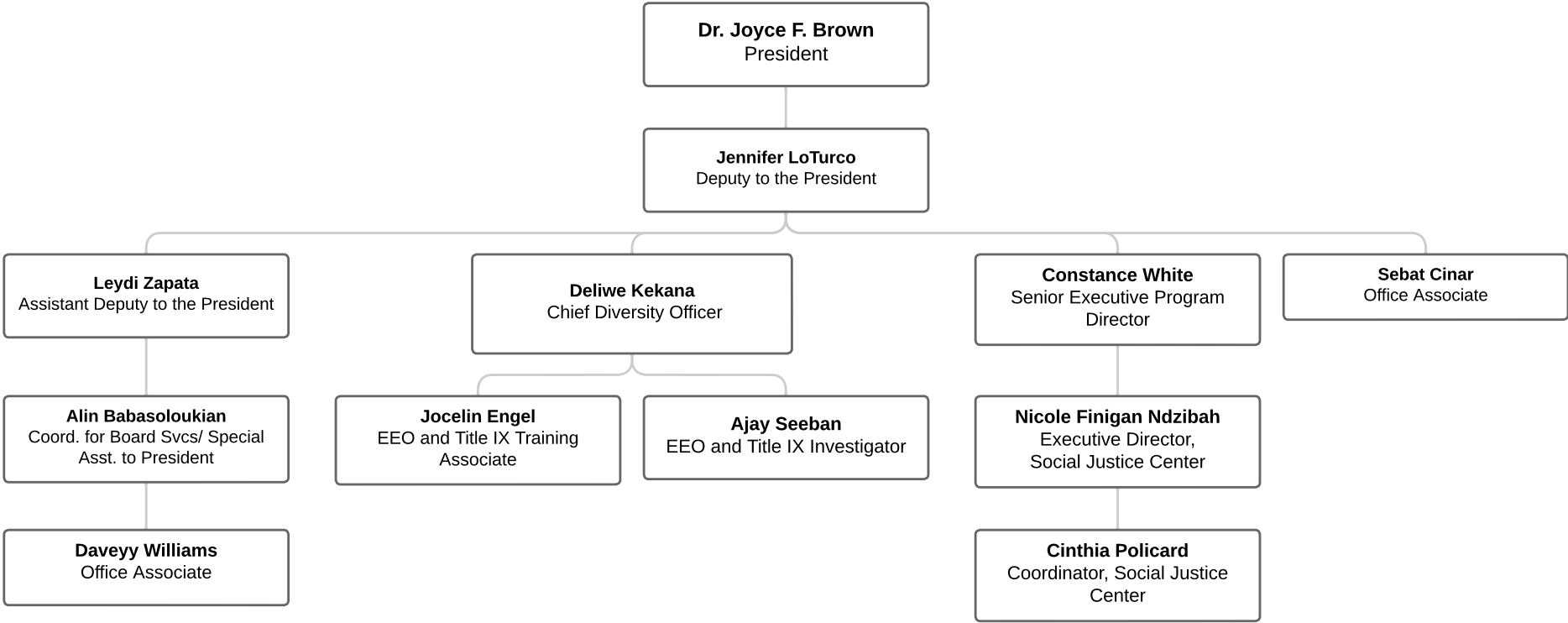
- Please submit an action form for all reporting changes.
- All Supervisor changes will be made on the **10th of each month**. This allows for pending leave reports to be reviewed and approved prior to any changes being made.
- Organizational chart changes will be reflected after the **16th of each month**. If you submitted an action form after this date, the change will be reflected in the following month.

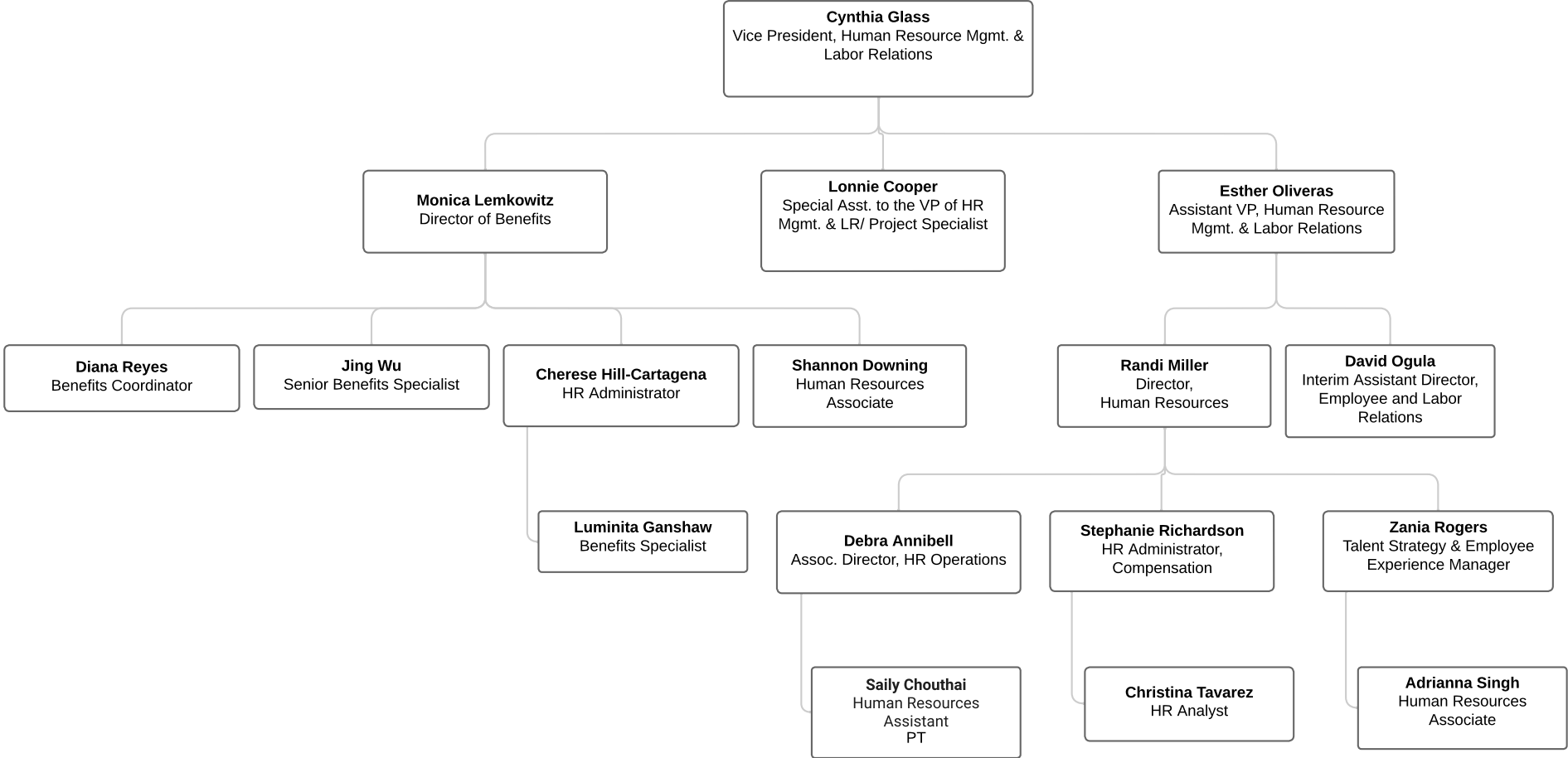
## TABLE OF CONTENTS

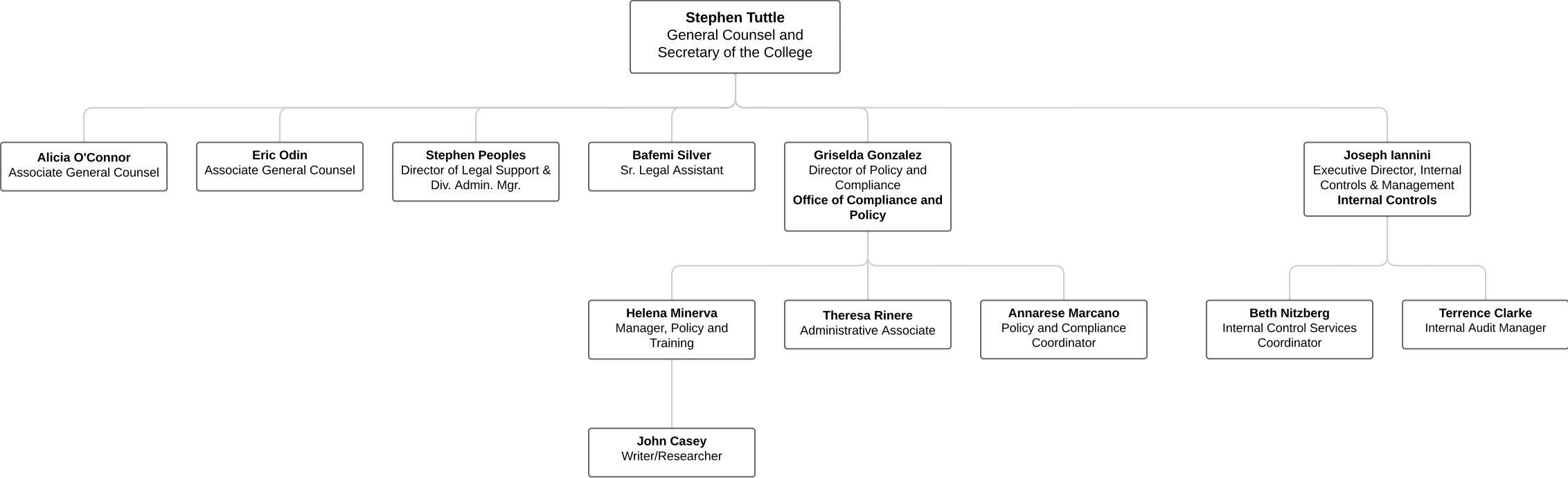
|   |              |
|---|--------------|
| <b>EXECUTIVE ADMINISTRATION</b>   | <b>1</b>     |
| <b>PRESIDENT’S OFFICE</b>   | <b>2</b>     |
| <b>HUMAN RESOURCES</b>  | <b>3</b>     |
| <b>LEGAL AFFAIRS AND INSTITUTIONAL CONTROLS</b>   | <b>4</b>     |
| <b>ACADEMIC AFFAIRS</b>   | <b>5-32</b>  |
| <hr/>   |              |
| <b>VP- ACADEMIC AFFAIRS &amp; SUPPORT SERVICES</b>  | <b>5</b>     |
| <i>VICE PRESIDENT OF ACADEMIC AFFAIRS, GRANTS OFFICE, INTERNATIONAL PROGRAMS AND PRESIDENTIAL SCHOLARS</i>                            |              |
| <b>AVP- FACULTY AND ACADEMIC SUPPORT</b>  | <b>6-10</b>  |
| FACULTY AND ACADEMIC SUPPORT I- CURRICULUM, INTERNSHIP STUDIES, FACULTY DEVELOPMENT<br>& CET, ONLINE LEARNING & ACADEMIC TECHNOLOGIES | 6            |
| FACULTY AND ACADEMIC SUPPORT II- ACADEMIC ADVISEMENT, ACADEMIC SKILLS, WRITING STUDIO<br>AND TESTING CENTER                           | 7            |
| CAREER AND INTERNSHIP SERVICES  | 8            |
| FACULTY SERVICES  | 9            |
| <b>SCHOOL OF ART AND DESIGN</b>   | <b>10-18</b> |
| DEAN’S OFFICE   | 10           |
| FINE ARTS   | 11           |
| COMMUNICATION DESIGN PATHWAYS   | 12           |
| FASHION   | 13           |
| ILLUSTRATION & INTERACTIVE MEDIA  | 14           |
| INTERIOR DESIGN   | 15           |
| PHOTOGRAPHY AND RELATED MEDIA   | 16           |
| TEXTILE/SURFACE DESIGN  | 17           |
| TOY DESIGN  | 18           |
| <b>SCHOOL OF BUSINESS AND TECHNOLOGY</b>  | <b>19-25</b> |
| DEAN’S OFFICE, HOME PRODUCTS DEVELOPMENT, TECHNICAL DESIGN, & ENTREPRENEURSHIP  | 19           |
| COSMETIC & FRAGRANCE MARKETING  | 20           |
| MARKETING COMMUNICATIONS  | 21           |
| FASHION BUSINESS MANAGEMENT   | 22           |
| INTERNATIONAL TRADE AND MARKETING   | 23           |
| PRODUCTION MANAGEMENT   | 24           |
| TEXTILE DEVELOPMENT AND MARKETING   | 25           |
| <b>CENTER FOR CONTINUING AND PROFESSIONAL STUDIES</b>   | <b>26</b>    |
| <b>GLADYS MARCUS LIBRARY</b>  | <b>27</b>    |
| <b>SCHOOL OF GRADUATE STUDIES</b>   | <b>28</b>    |
| <b>SCHOOL OF LIBERAL ARTS</b>   | <b>29-35</b> |

|   |              |
|---|--------------|
| DEAN'S OFFICE AND EDUCATIONAL SKILLS  | 29           |
| ENGLISH AND COMMUNICATION STUDIES   | 30           |
| FILM, MEDIA, AND PERFORMING ARTS  | 31           |
| HISTORY OF ART  | 32           |
| MODERN LANGUAGES AND CULTURES   | 33           |
| SCIENCE AND MATH  | 34           |
| SOCIAL SCIENCES   | 35           |
| <b>COMMUNICATIONS &amp; EXTERNAL RELATIONS</b>  | <b>36</b>    |
| <b>ENROLLMENT MANAGEMENT AND STUDENT SUCCESS</b>  | <b>37-48</b> |
| <b>ENROLLMENT MANAGEMENT AND STUDENT SUCCESS DIVISION</b>   | <b>37</b>    |
| ADMISSIONS  | 38           |
| ATHLETICS AND RECREATION  | 39           |
| COUNSELING CENTER   | 40           |
| EDUCATION OPPORTUNITIES PROGRAMS  | 41           |
| FINANCIAL AID   | 42           |
| DISABILITY SUPPORT SERVICES/FIT-ABLE  | 43           |
| HEALTH SERVICES/STUDENT ASSOCIATION   | 44           |
| INTERNATIONAL STUDENT SERVICES  | 45           |
| REGISTRATION AND RECORDS  | 46           |
| RESIDENTIAL LIFE  | 47           |
| STUDENT LIFE  | 48           |
| <b>FINANCE AND ADMINISTRATION</b>   | <b>49-52</b> |
| <b>FINANCE AND ADMINISTRATION DIVISION- CONTRACT ADMINISTRATION, ENVIRONMENTAL HEALTH<br/>&amp; SAFETY, SPACE PLANNING AND MANAGEMENT</b> | <b>49</b>    |
| ACCOUNTING  | 50           |
| BUDGET  | 51           |
| OFFICE OF THE BURSAR  | 52           |
| FACILITIES MANAGEMENT   | 53           |
| OPERATIONAL SERVICES  | 54           |
| PAYROLL   | 55           |
| PUBLIC SAFETY   | 56           |
| PURCHASING  | 57           |
| <b>FIT FOUNDATION</b>   | <b>58</b>    |
| <b>INFORMATION TECHNOLOGY</b>   | <b>59-62</b> |
| <b>INFORMATION TECHNOLOGY DIVISION- VP/CIO</b>  | <b>59</b>    |
| EDUCATION TECHNOLOGY  | 60           |
| ENTERPRISE APPLICATIONS   | 61           |
| ENTERPRISE INFRASTRUCTURE   | 62           |
| <b>MUSEUM AT FIT</b>  | <b>63</b>    |

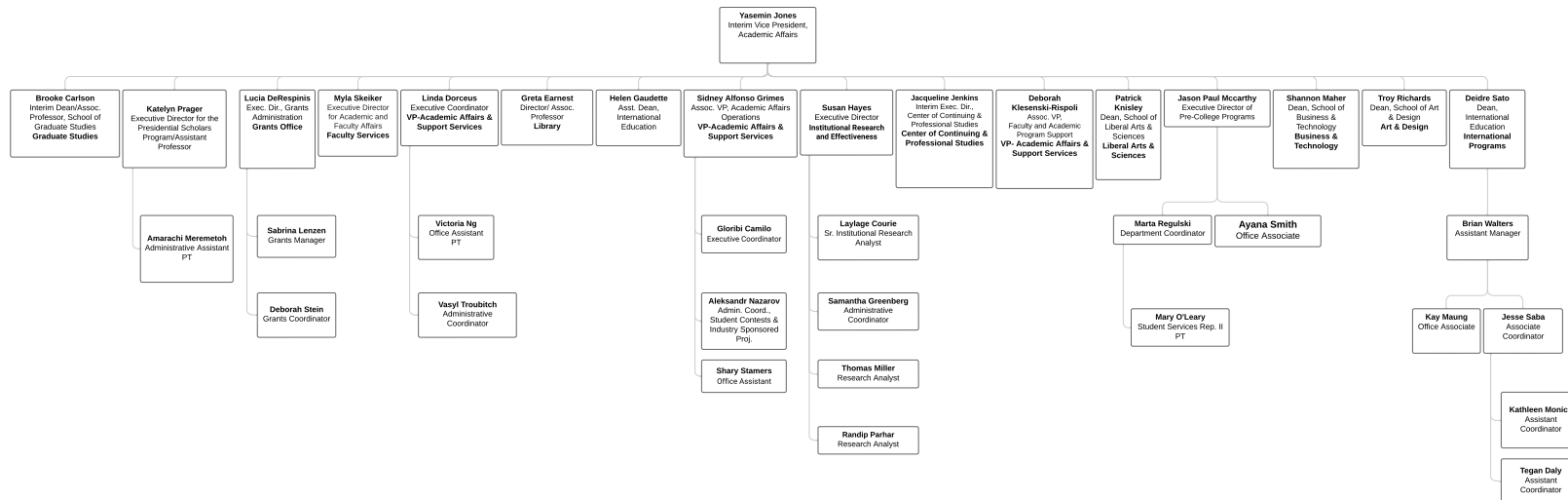


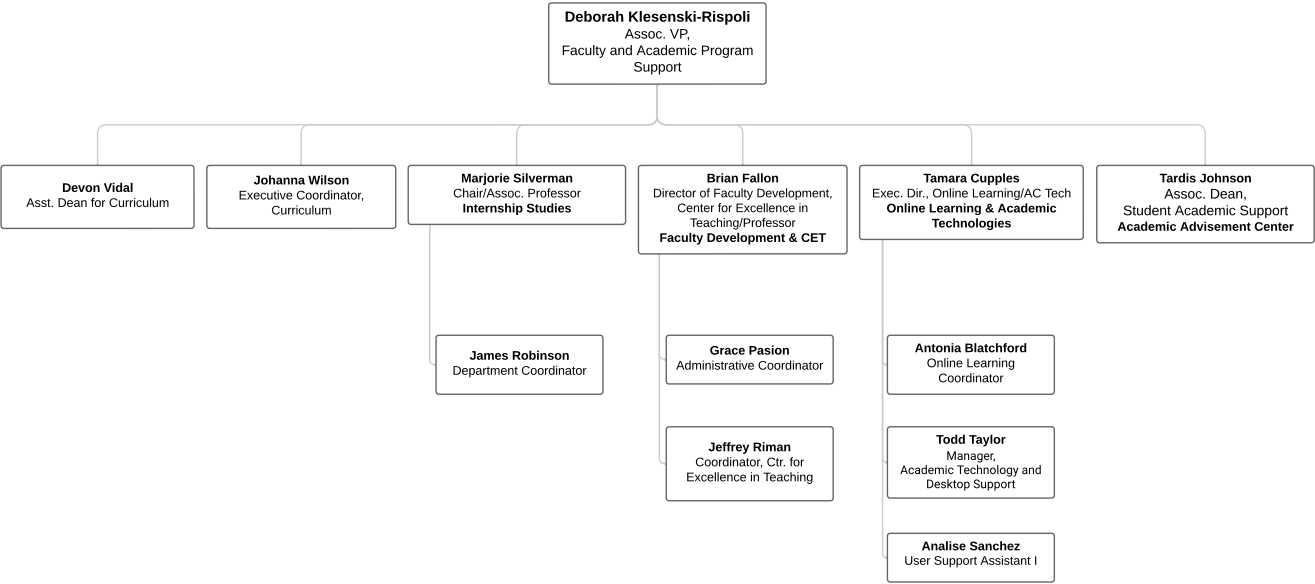






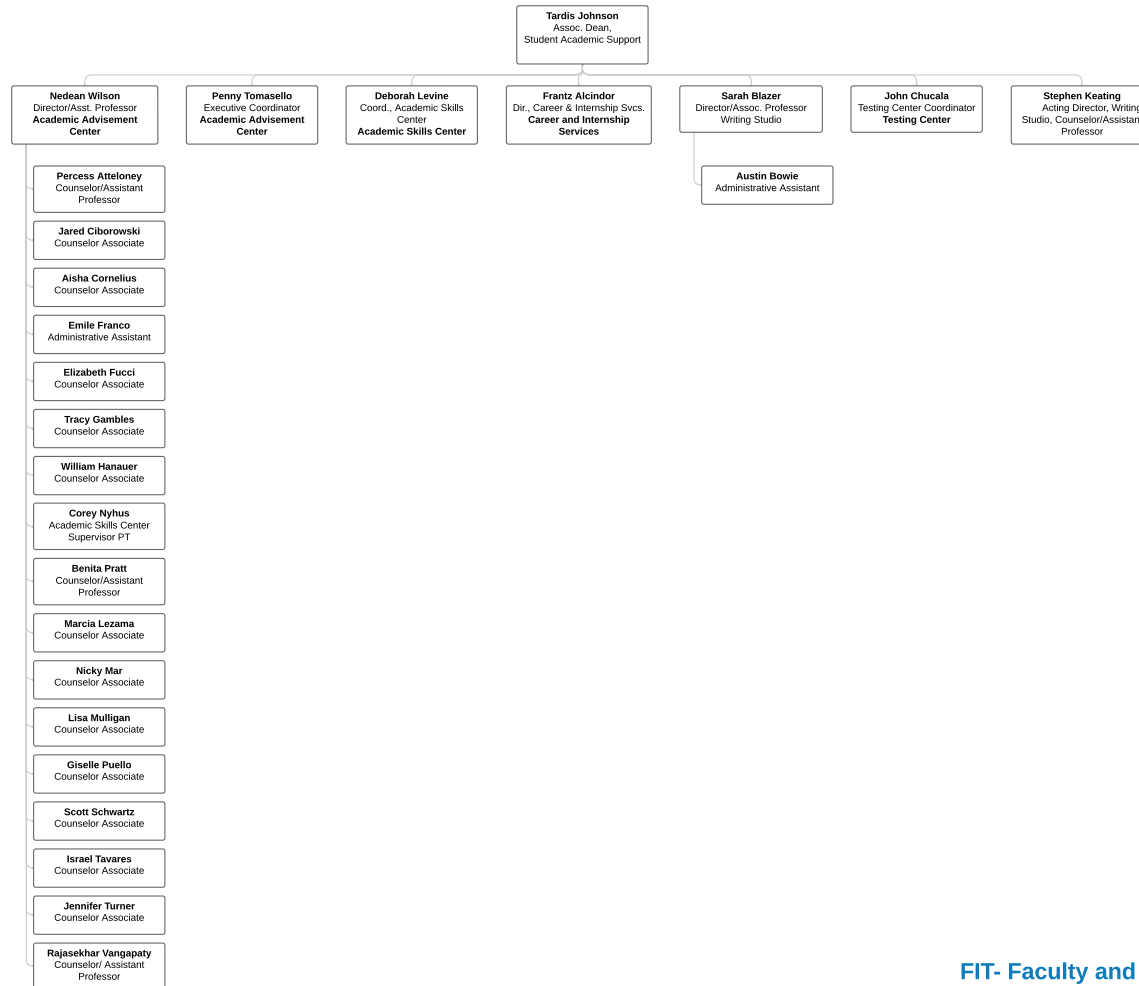




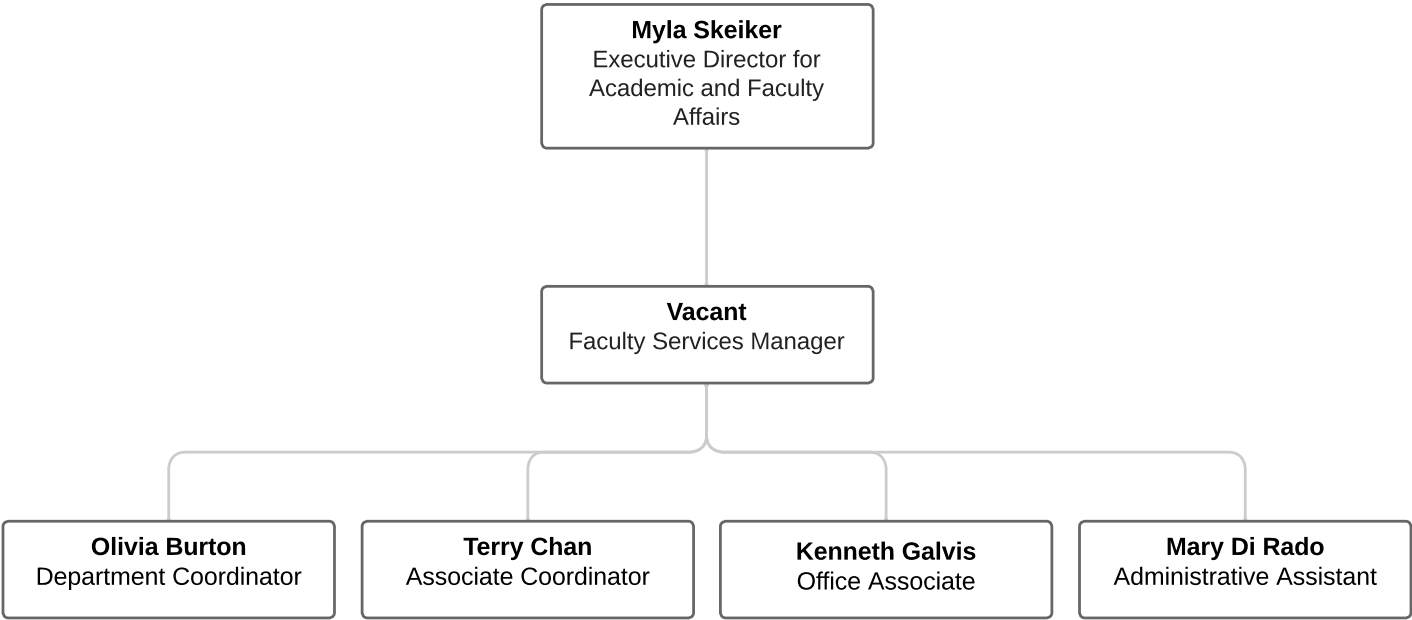


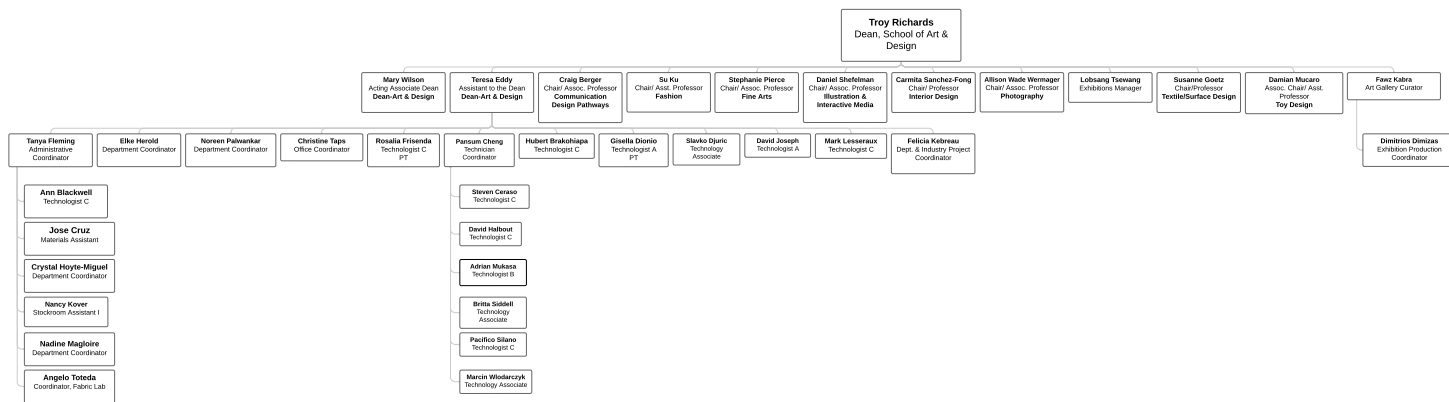


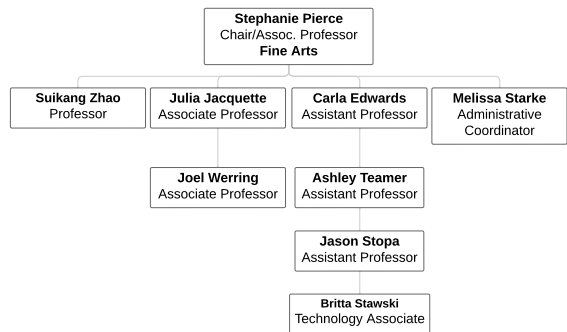
**State University  
of New York**  
Academic Affairs  
Faculty and Academic  
Program Support

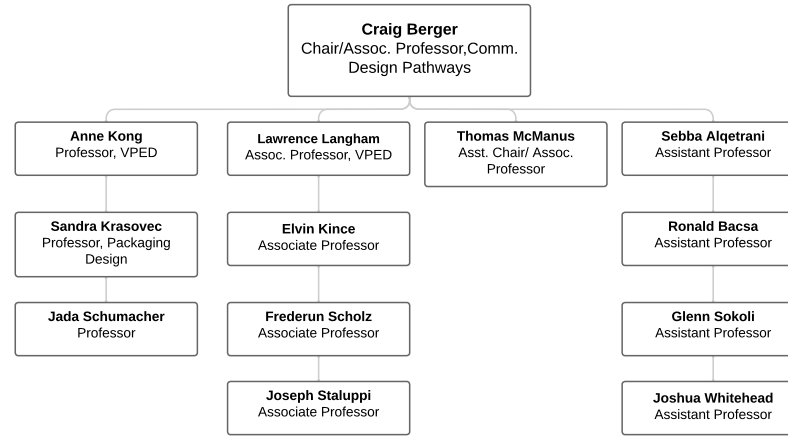




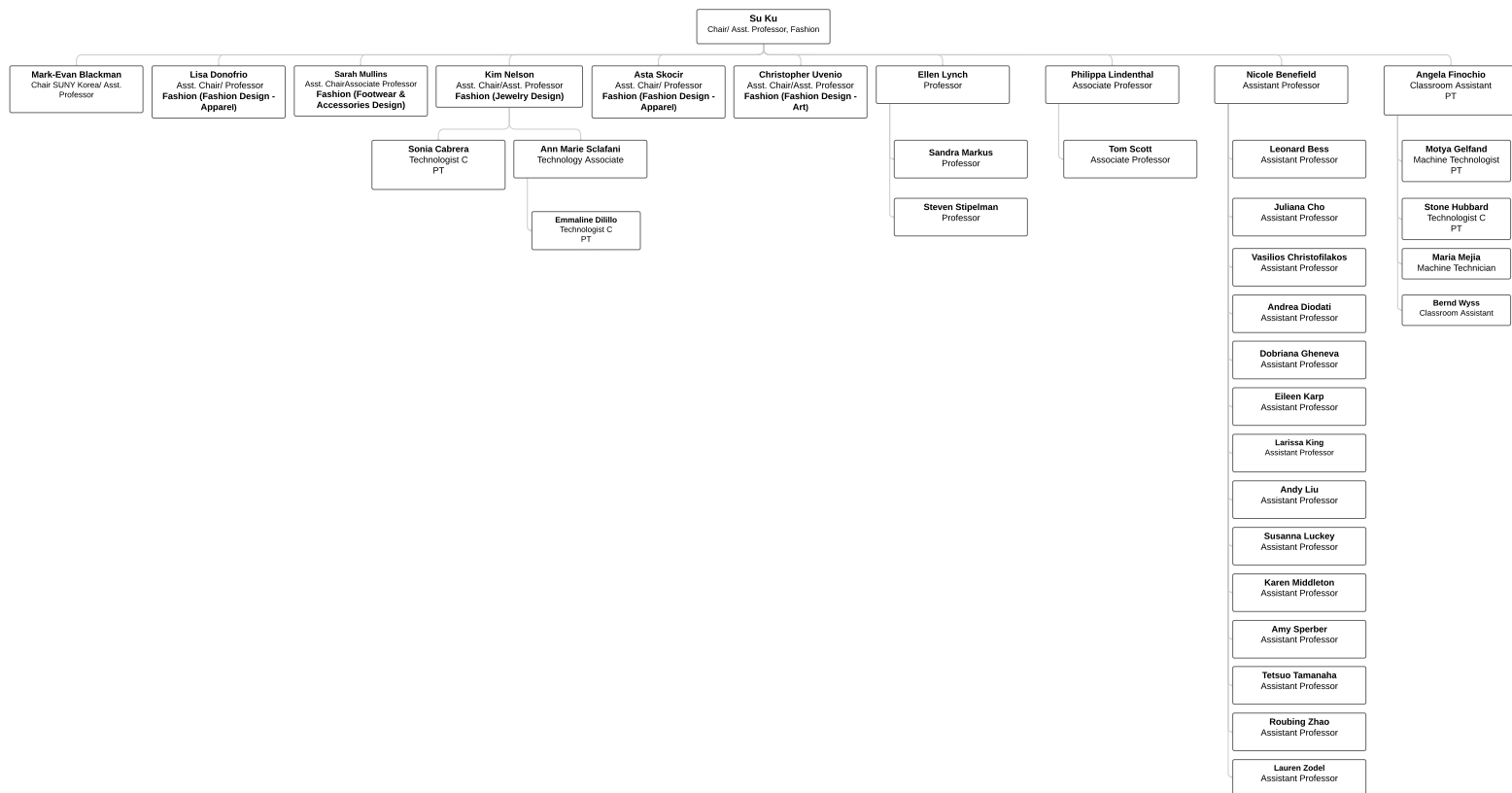


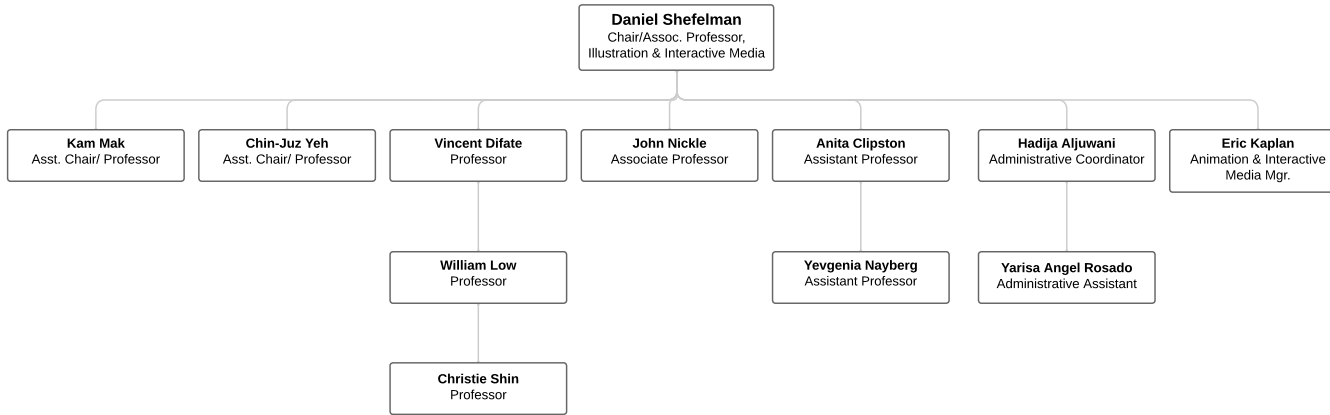


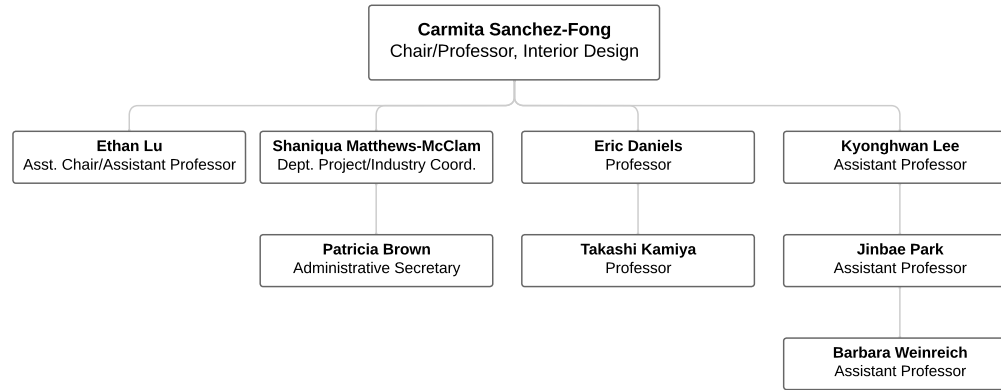


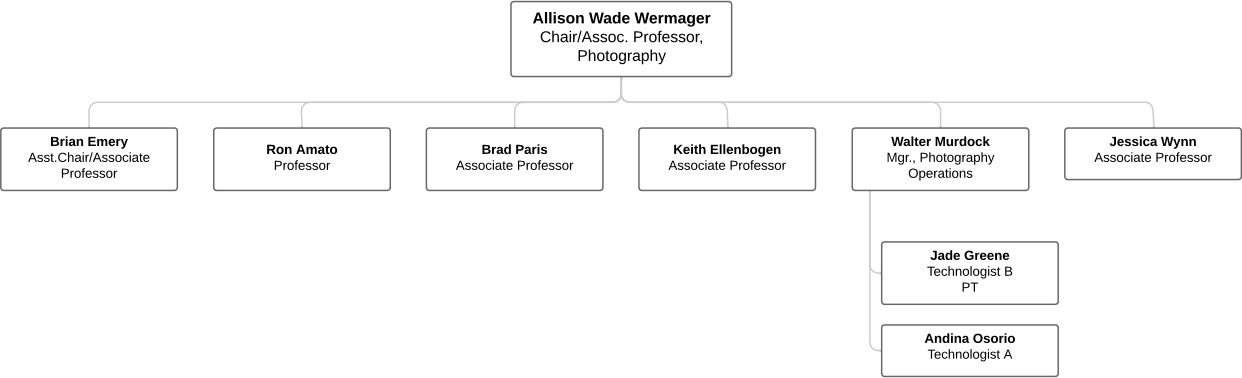






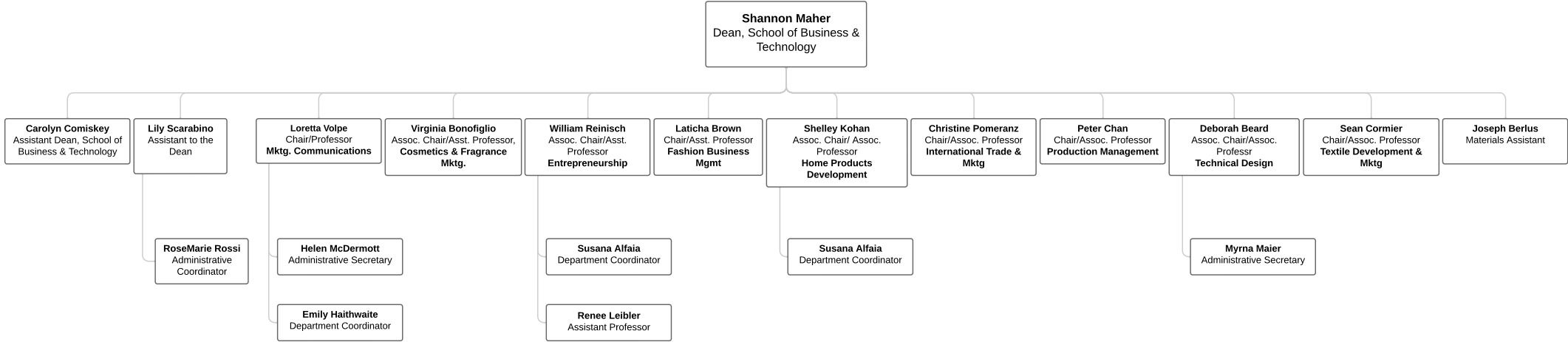


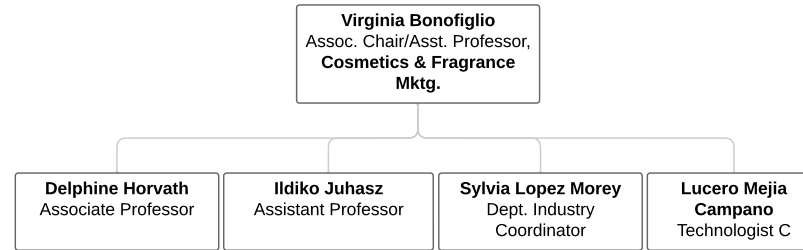




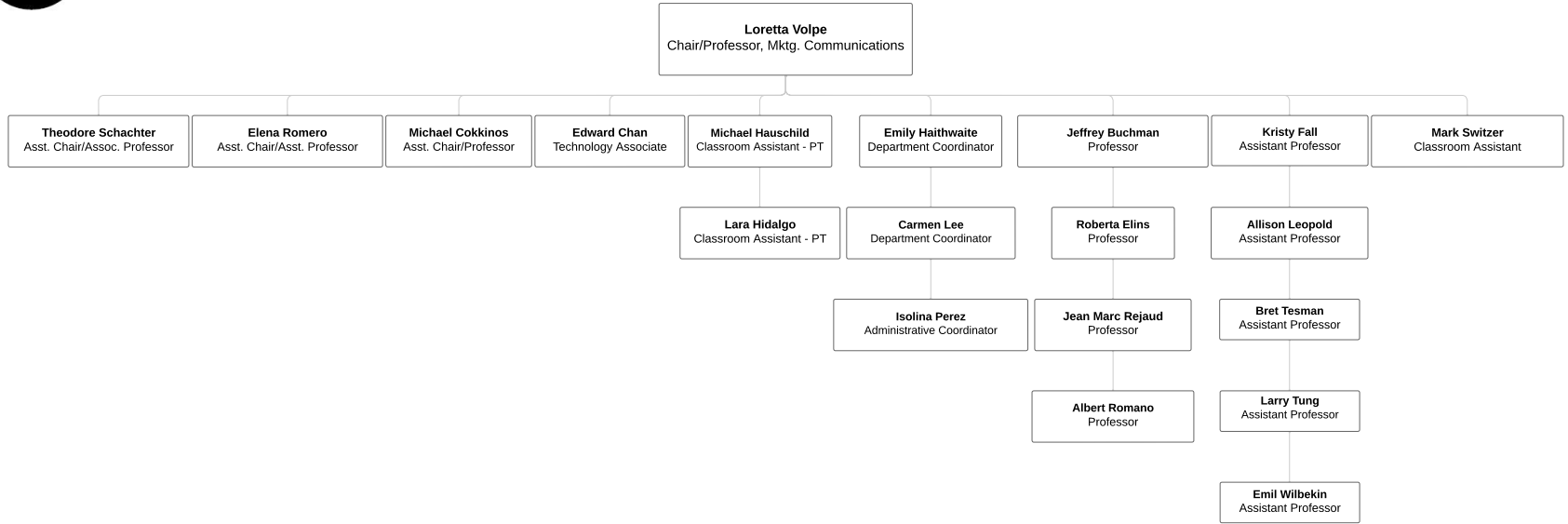


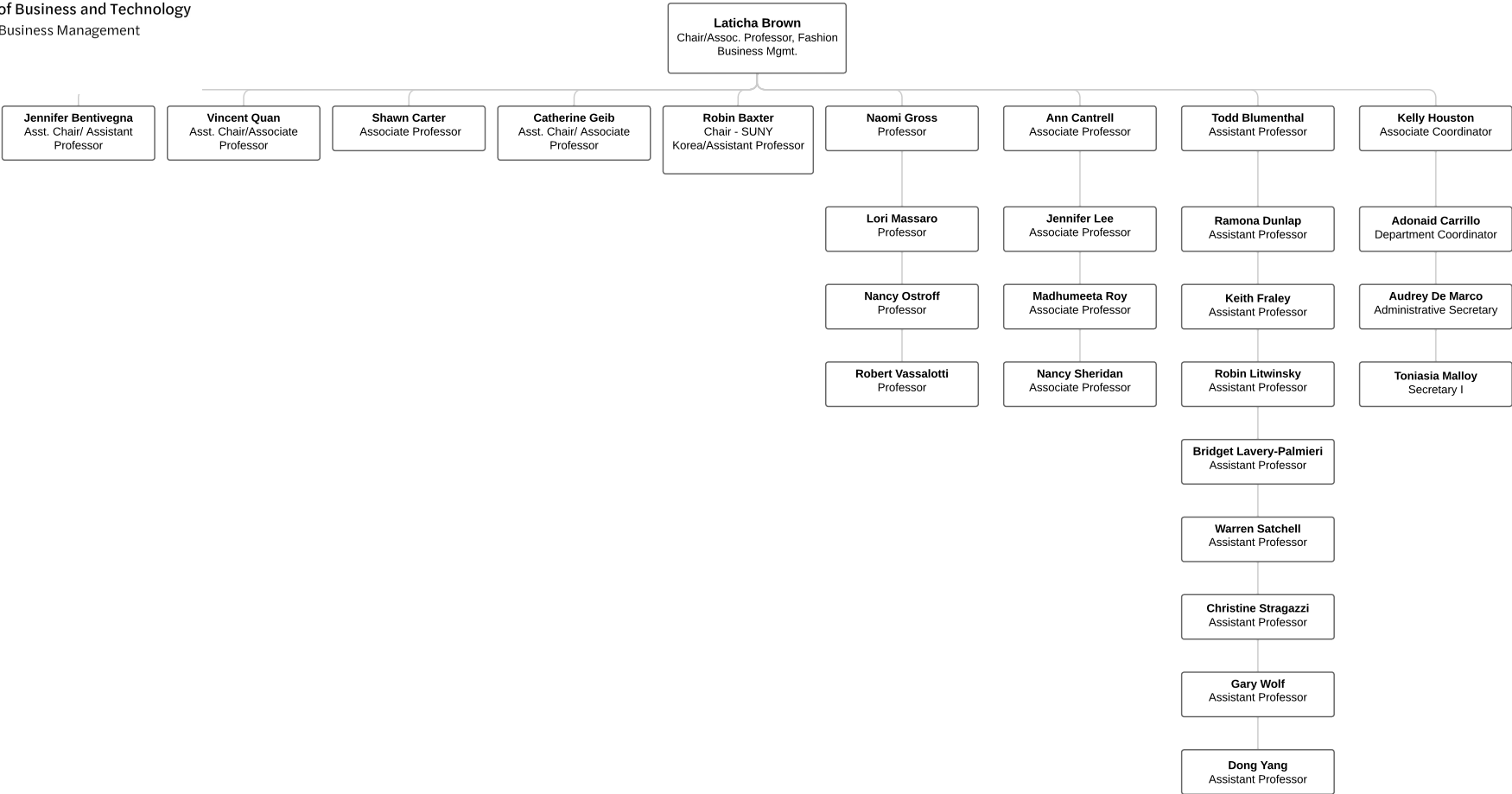


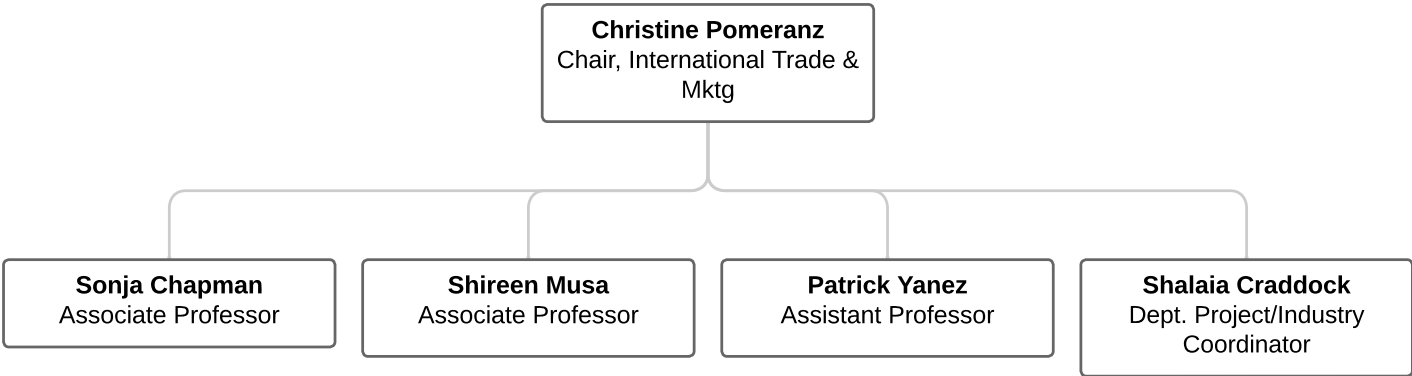


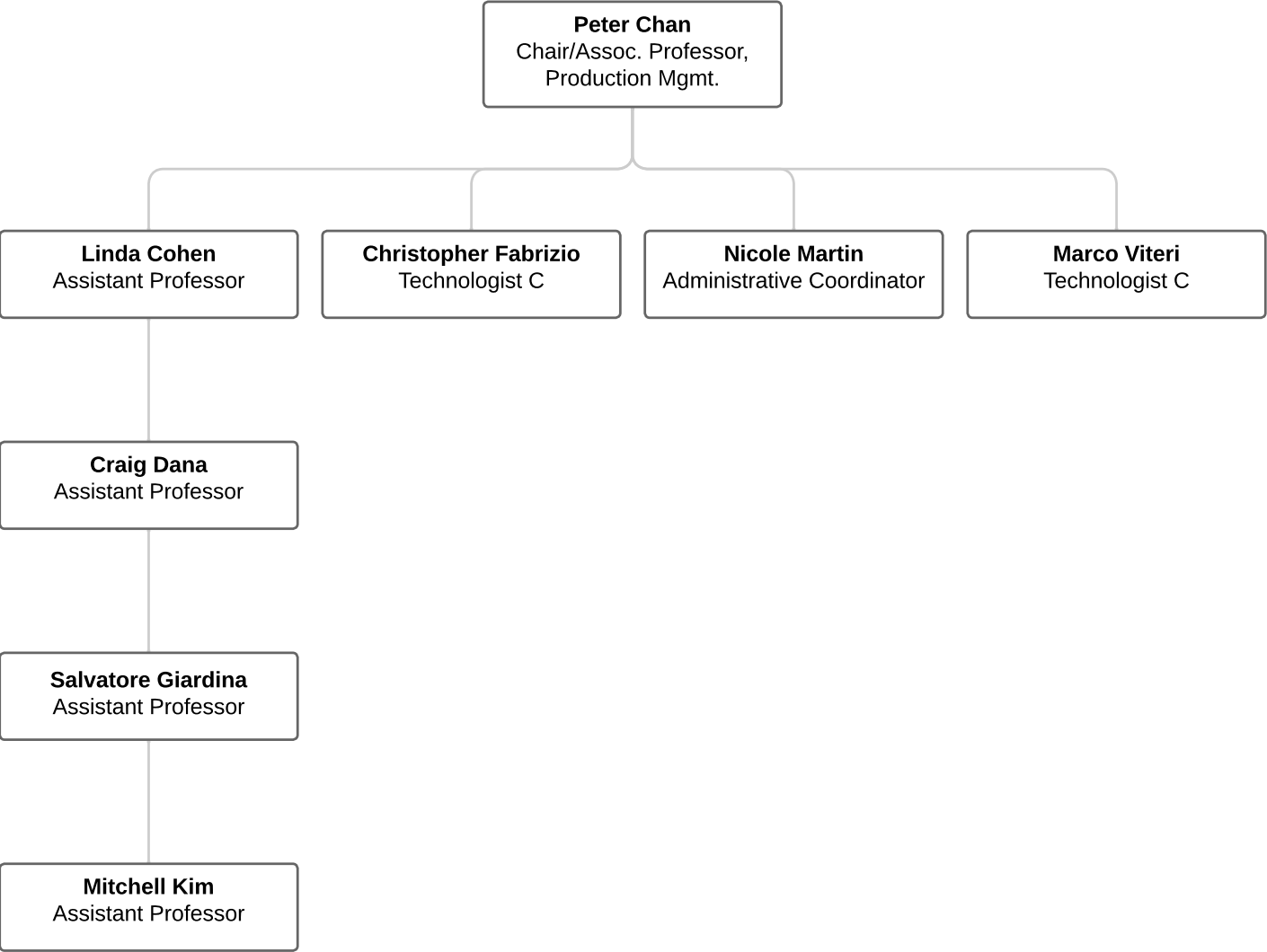


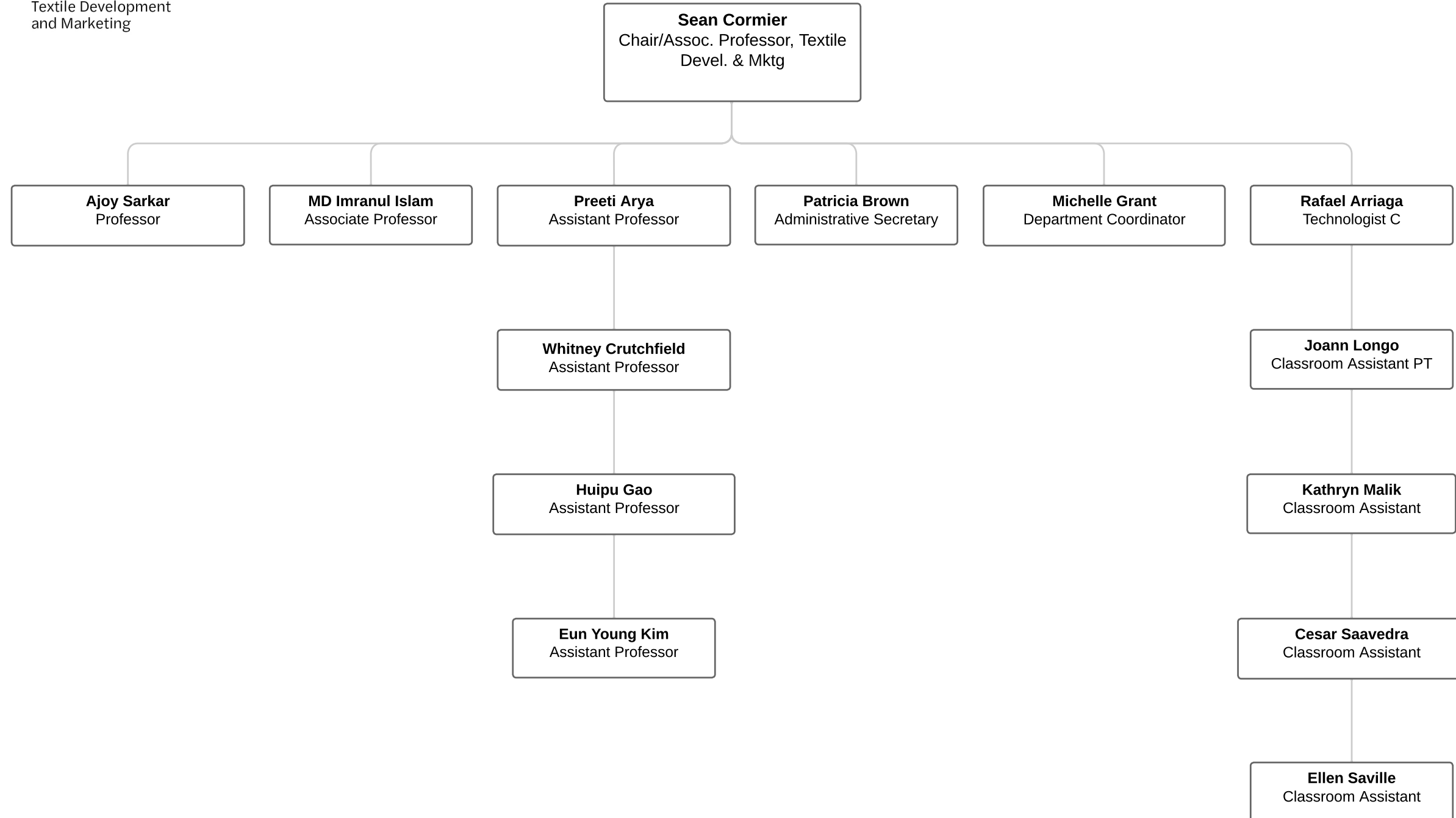


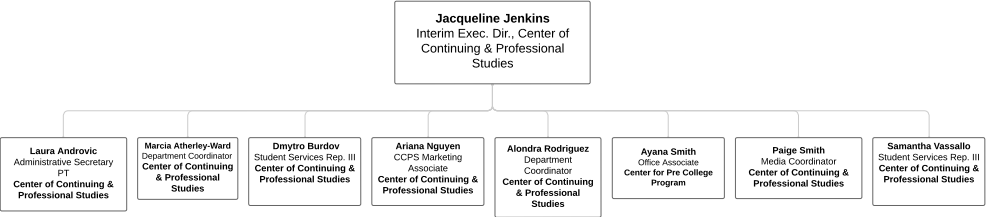


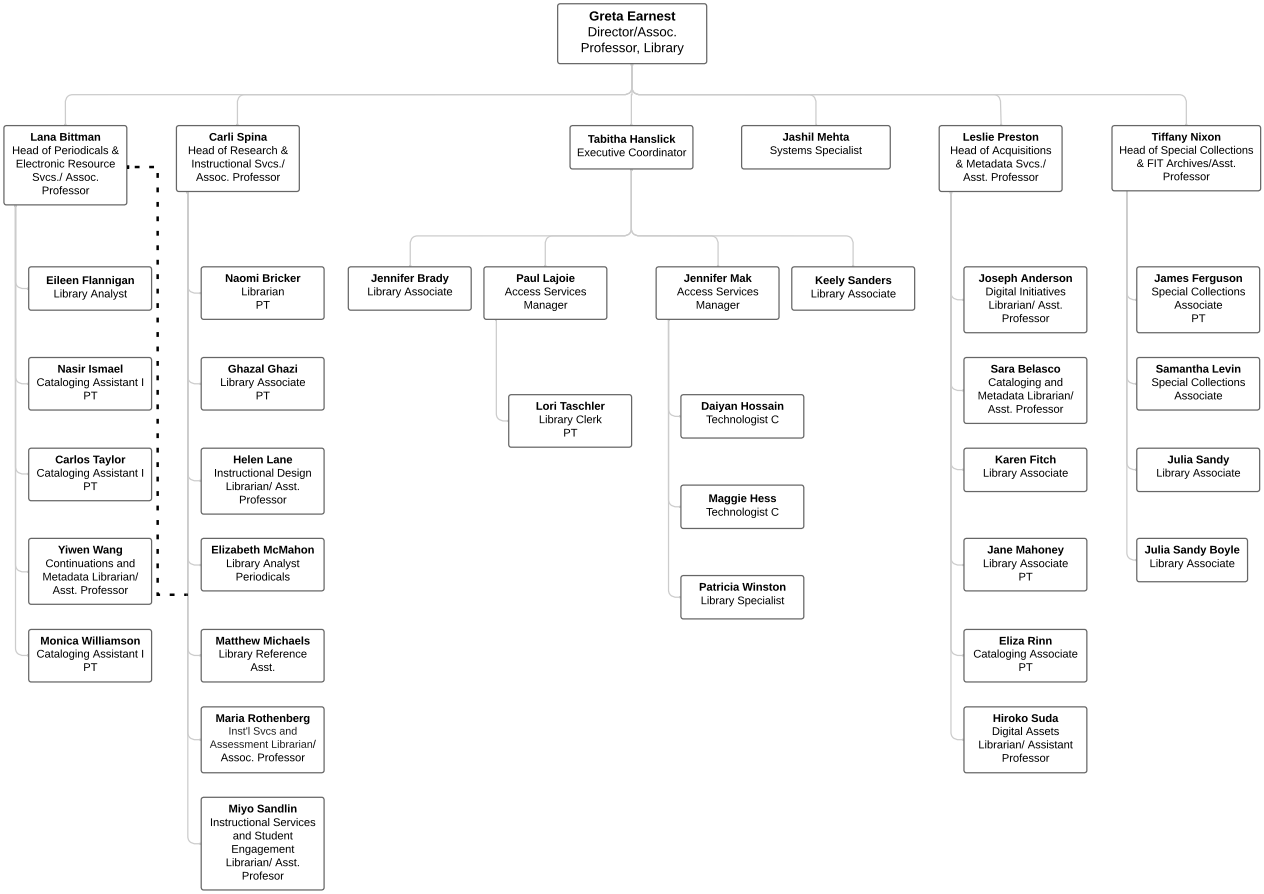


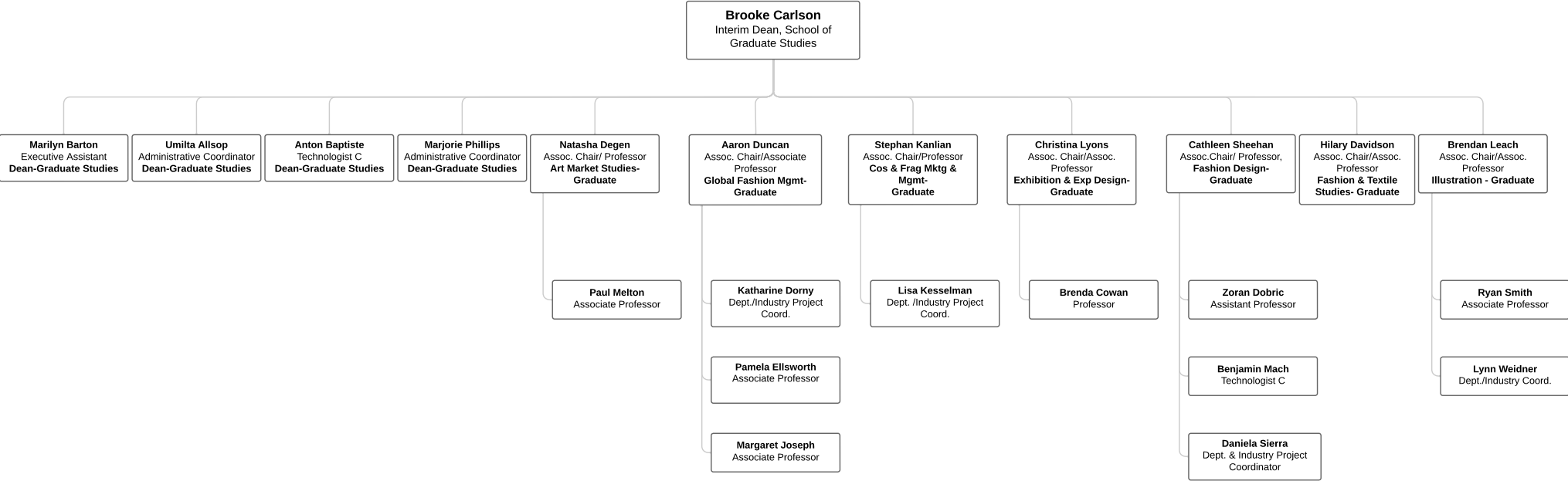




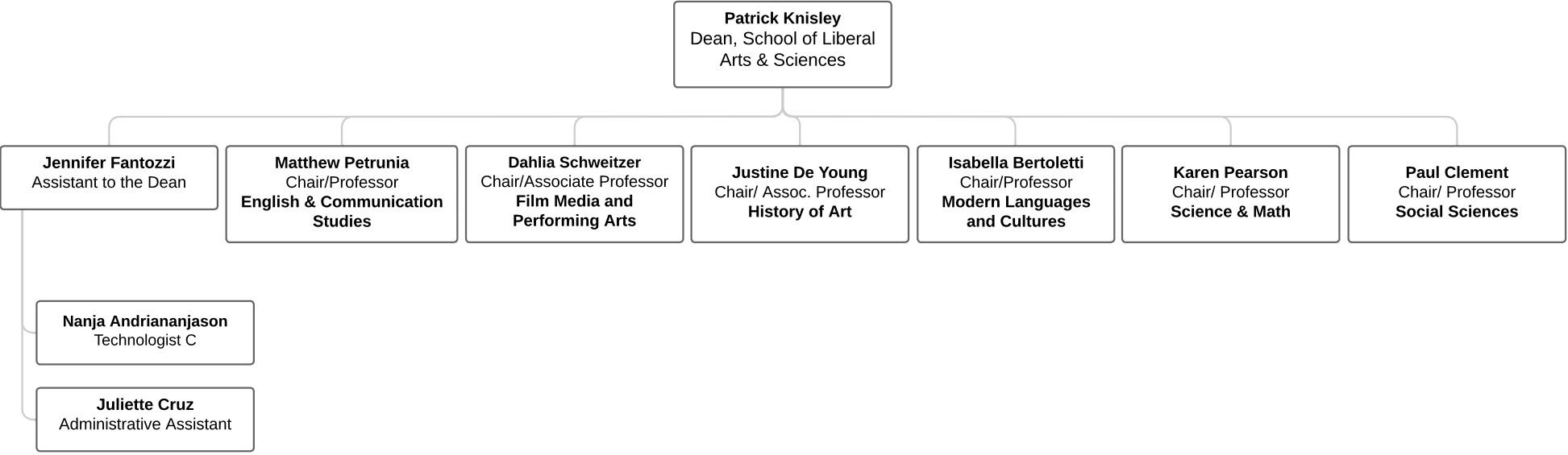


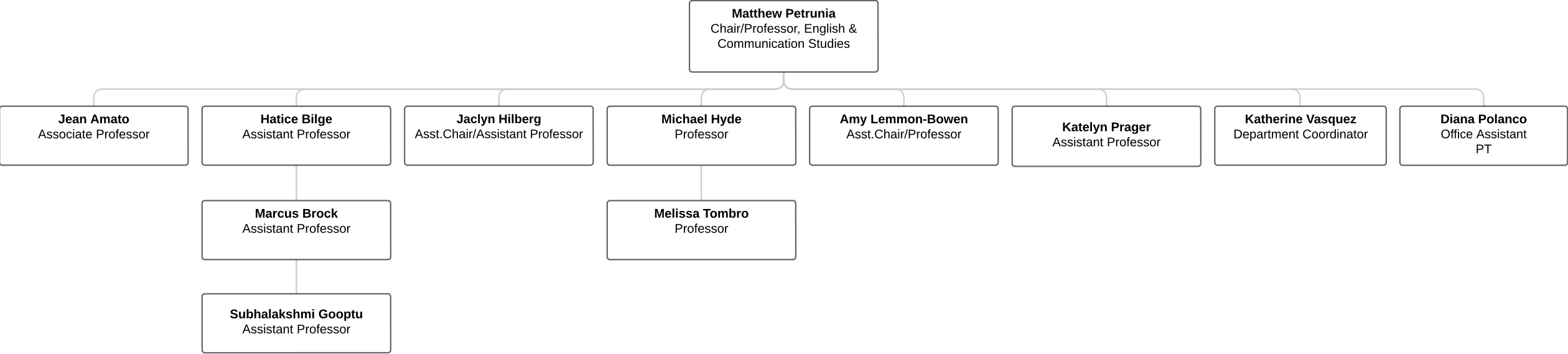


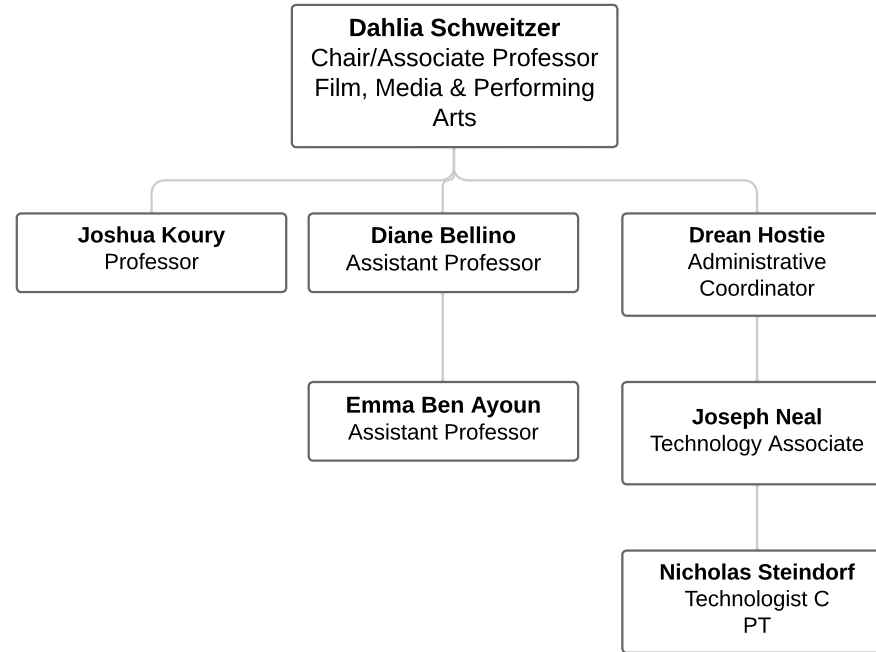


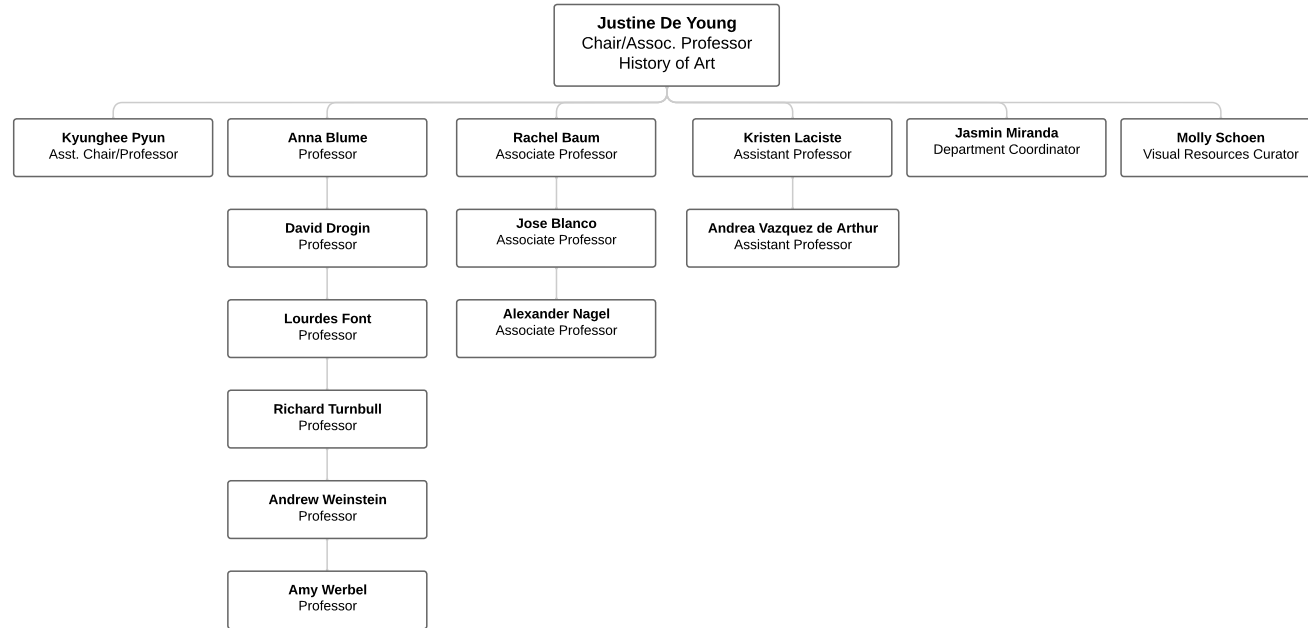


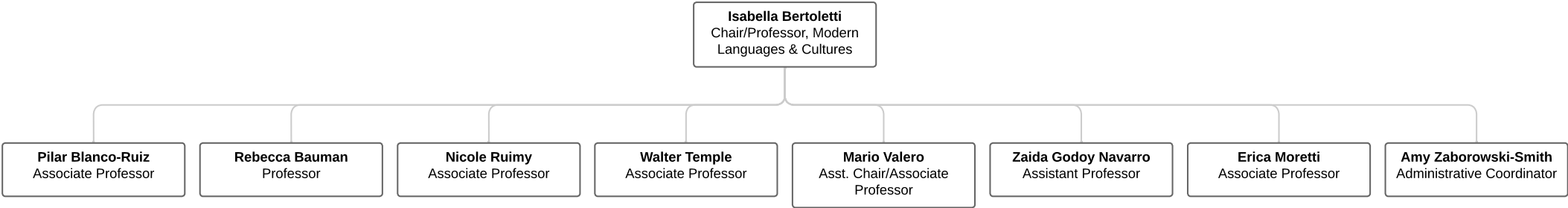


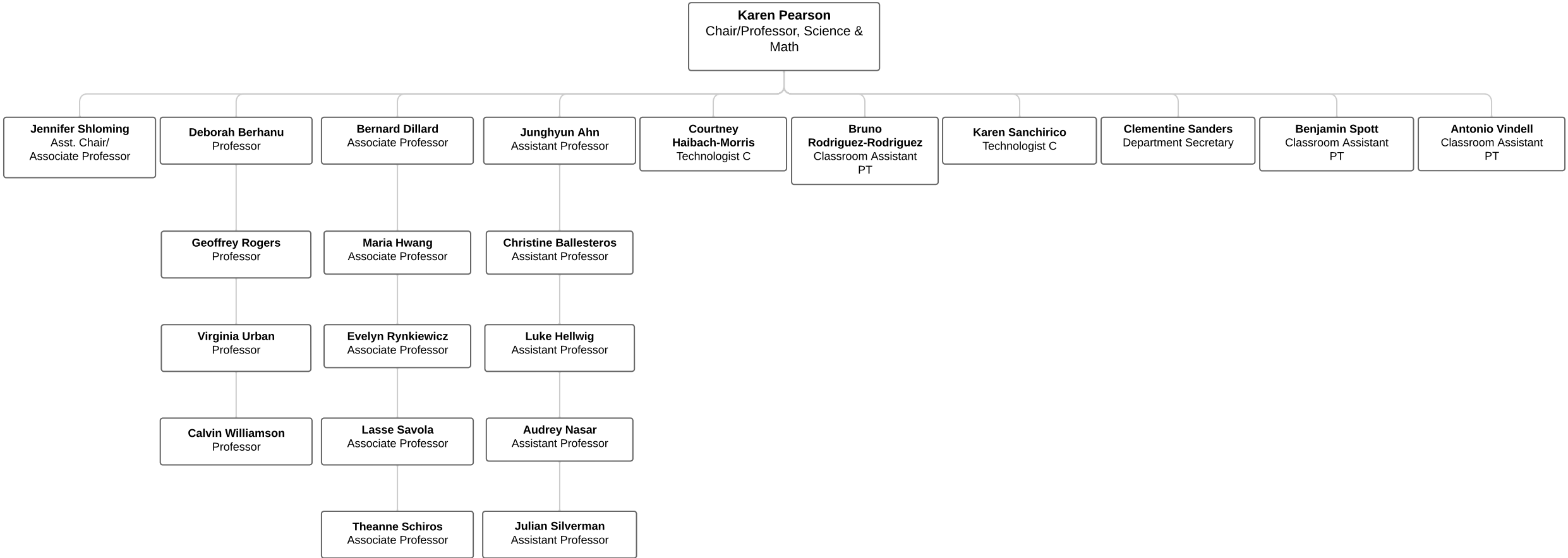


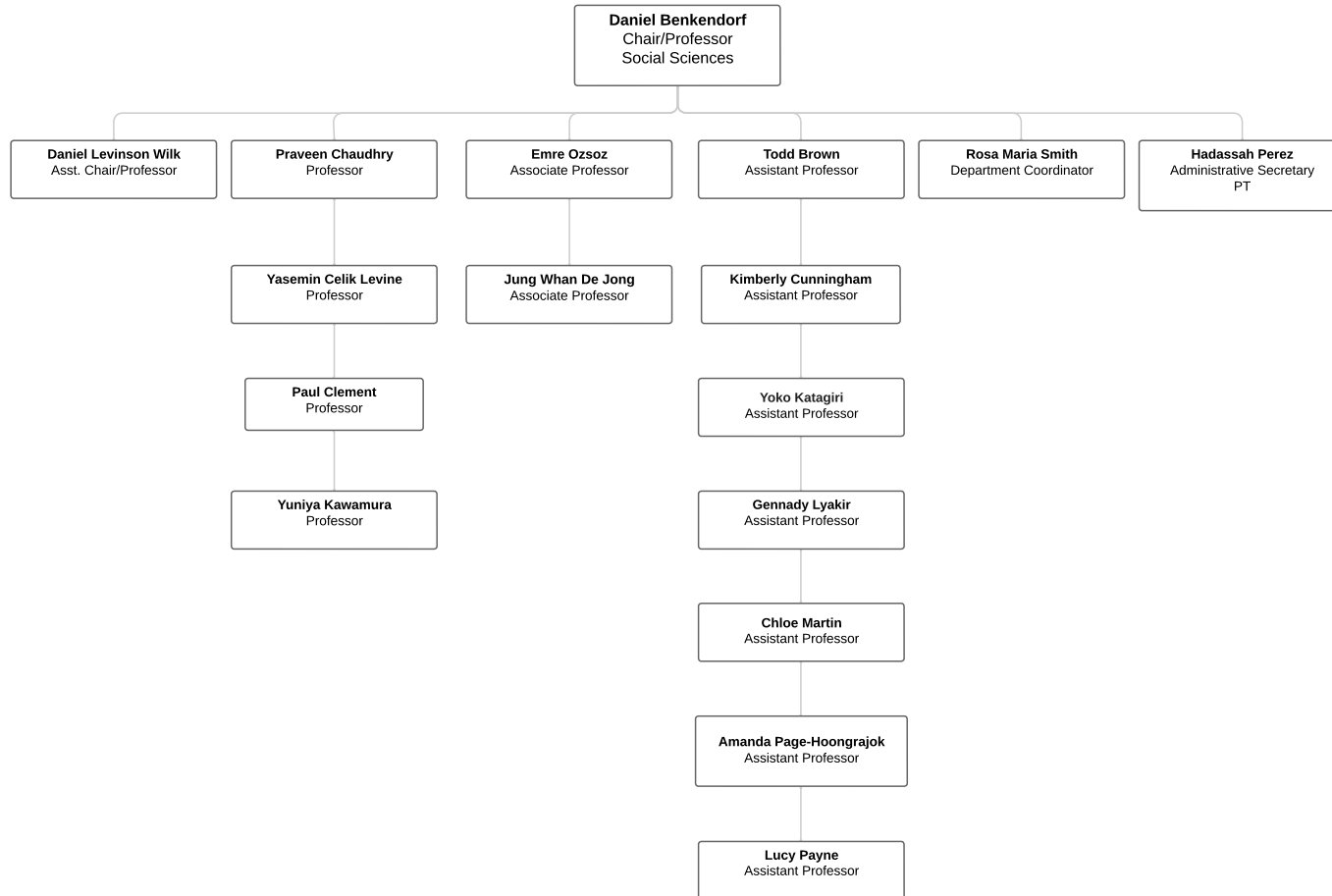


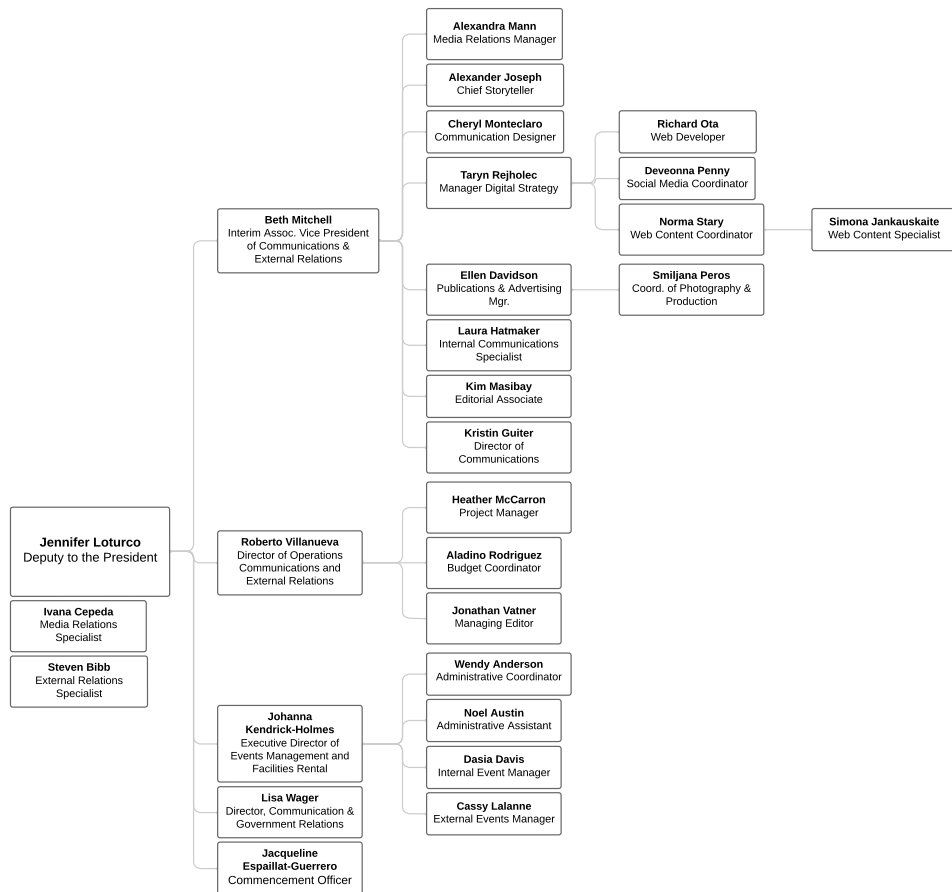




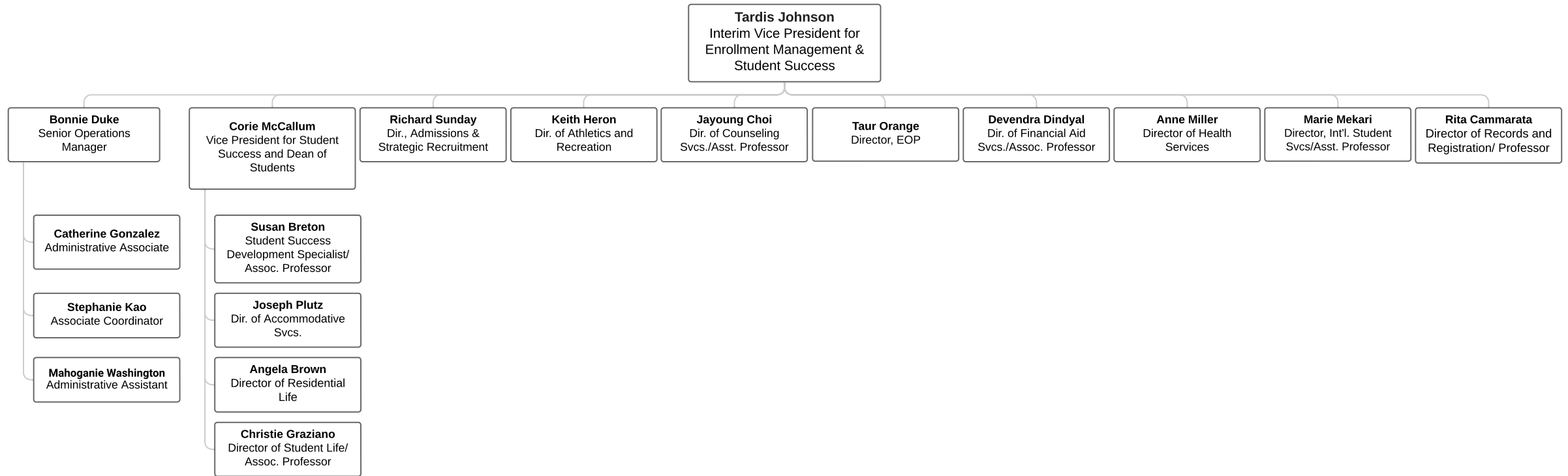








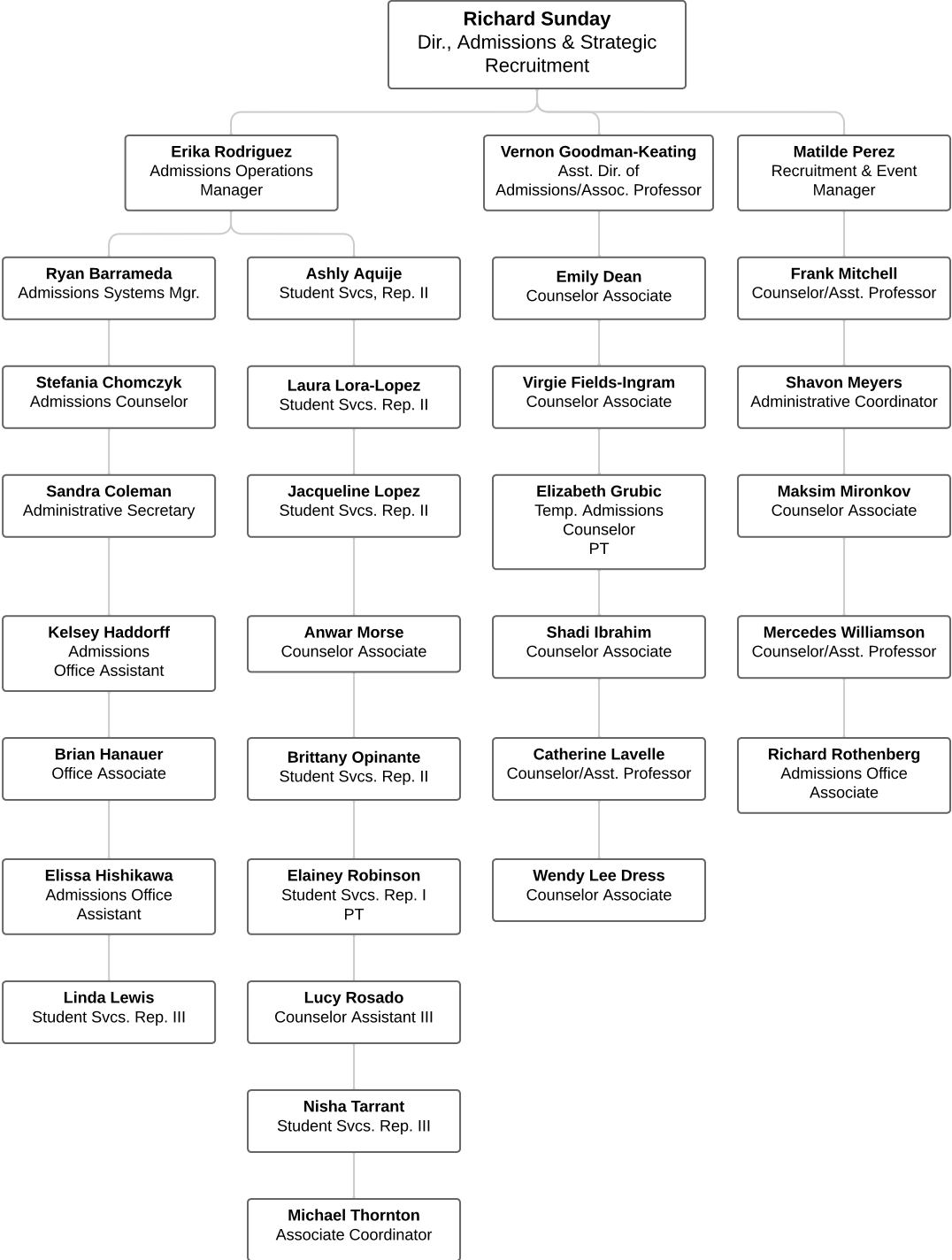


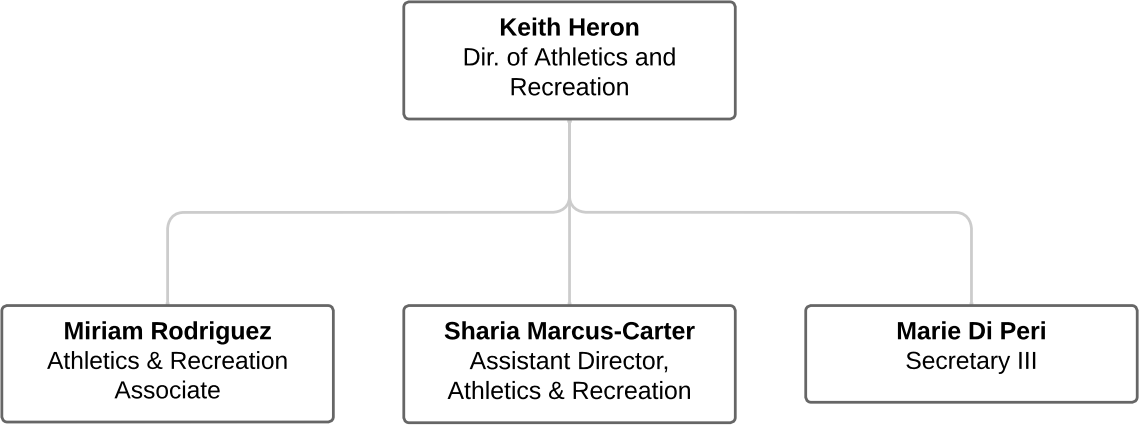


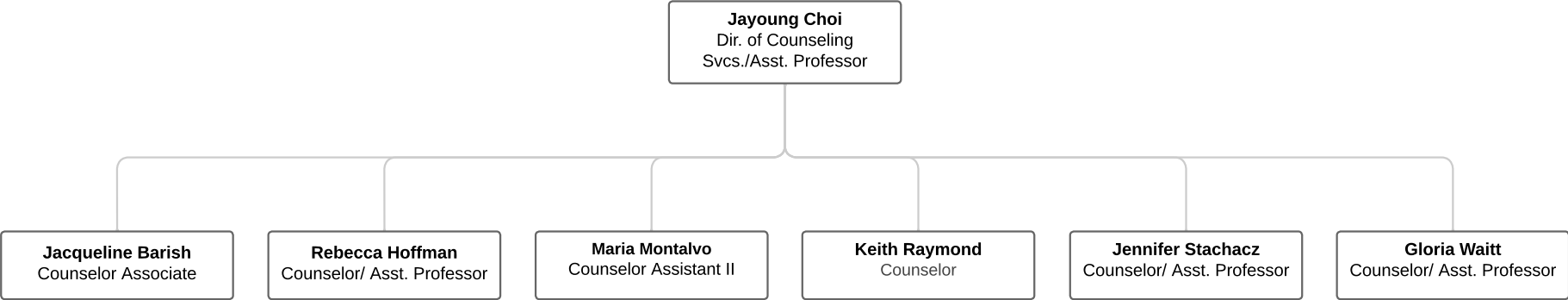


**State University  
of New York**

Enrollment Management  
and Student Success  
Admissions



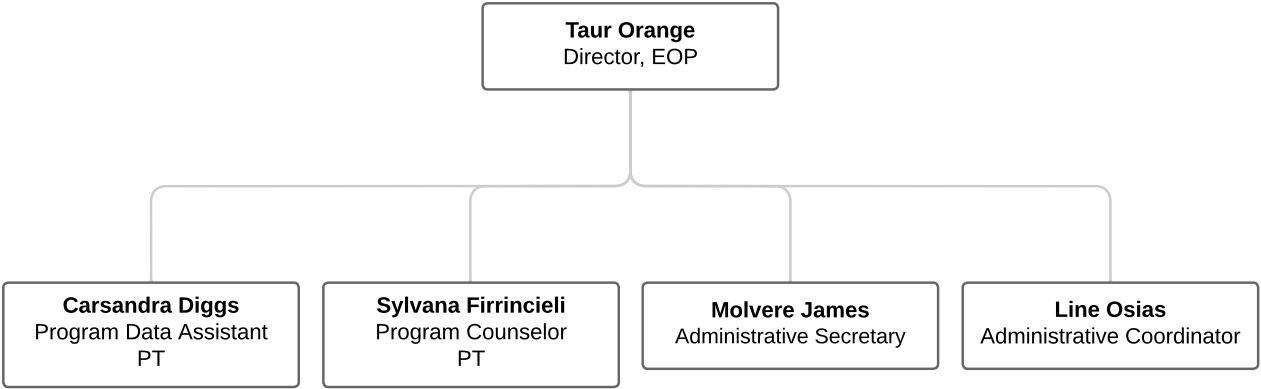


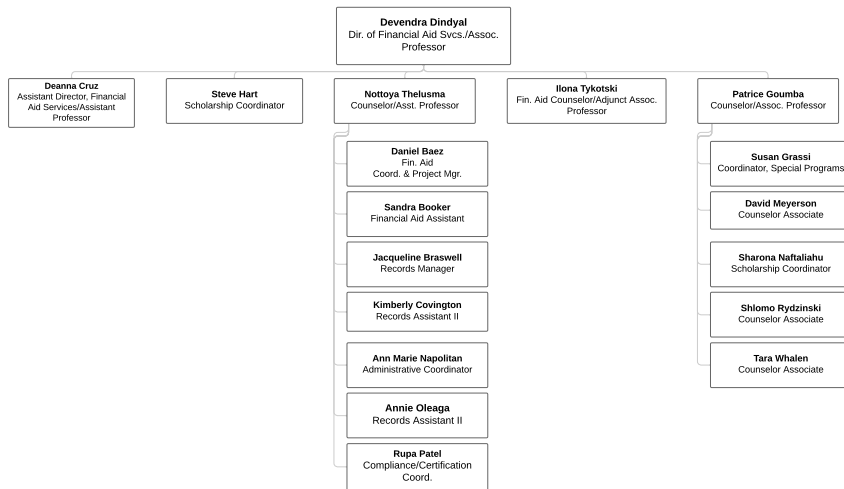


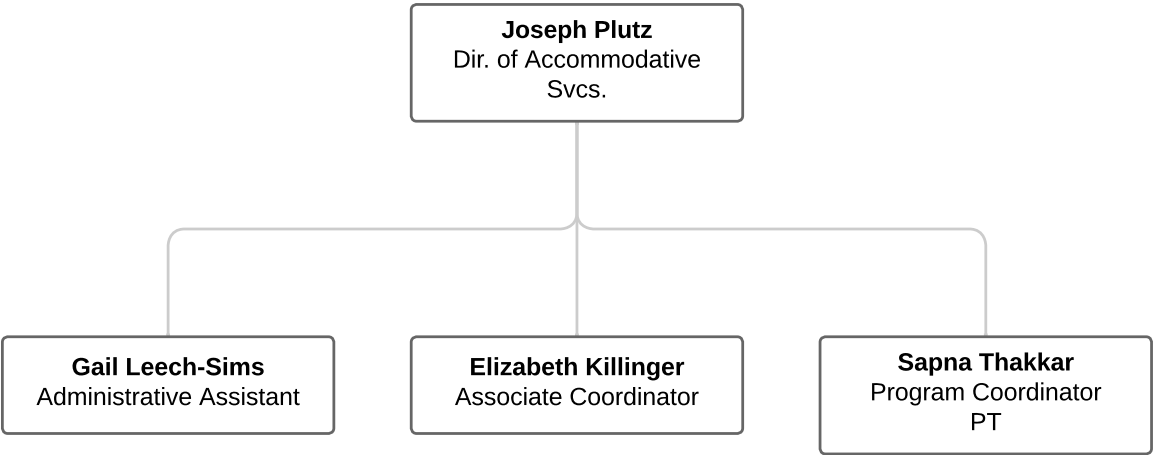


**State University  
of New York**

Enrollment Management  
and Student Success  
Educational Opportunity Programs



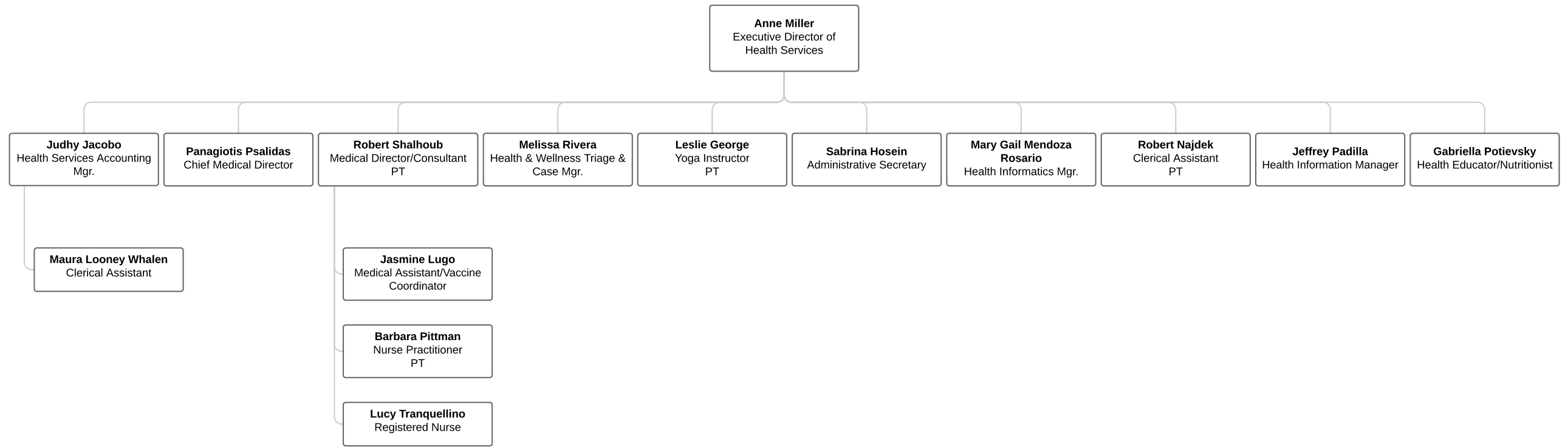




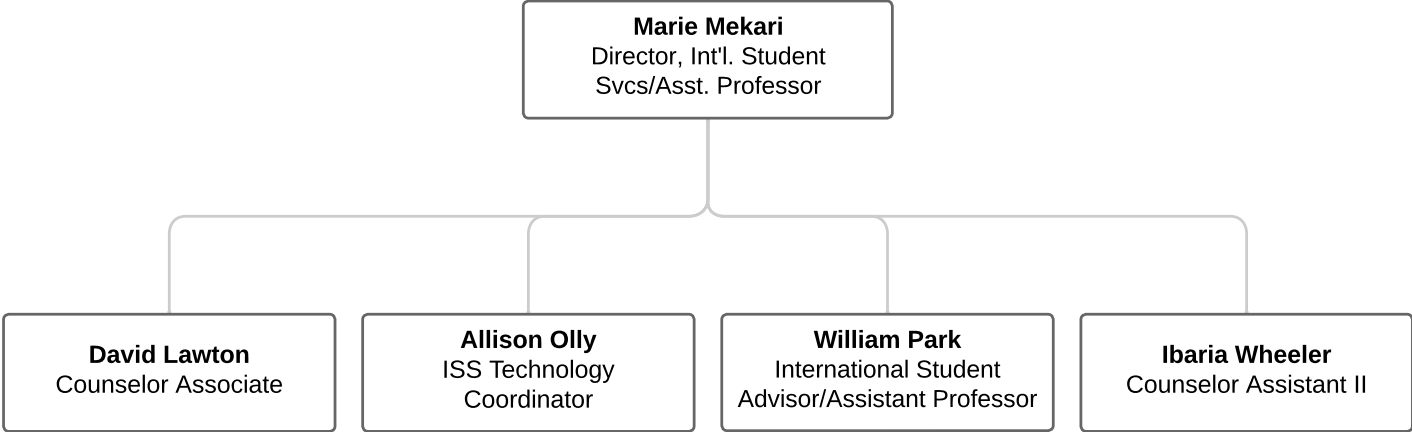


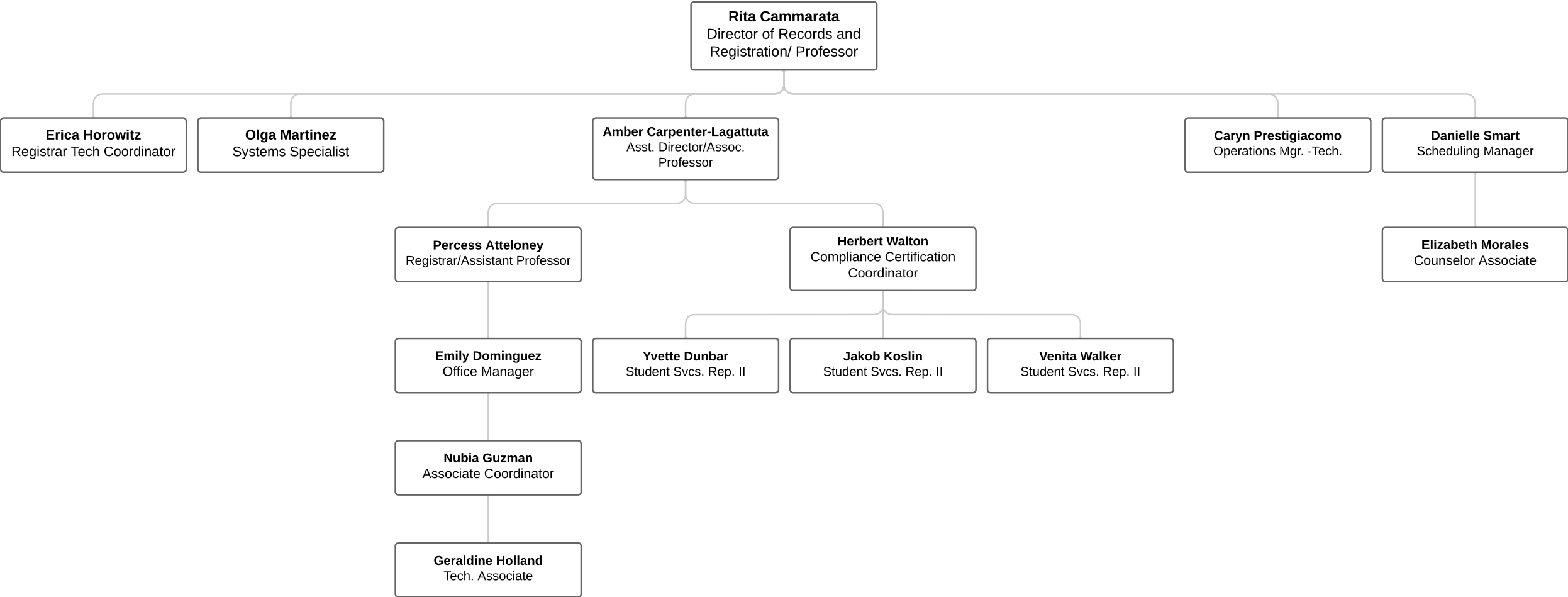
State University  
of New York

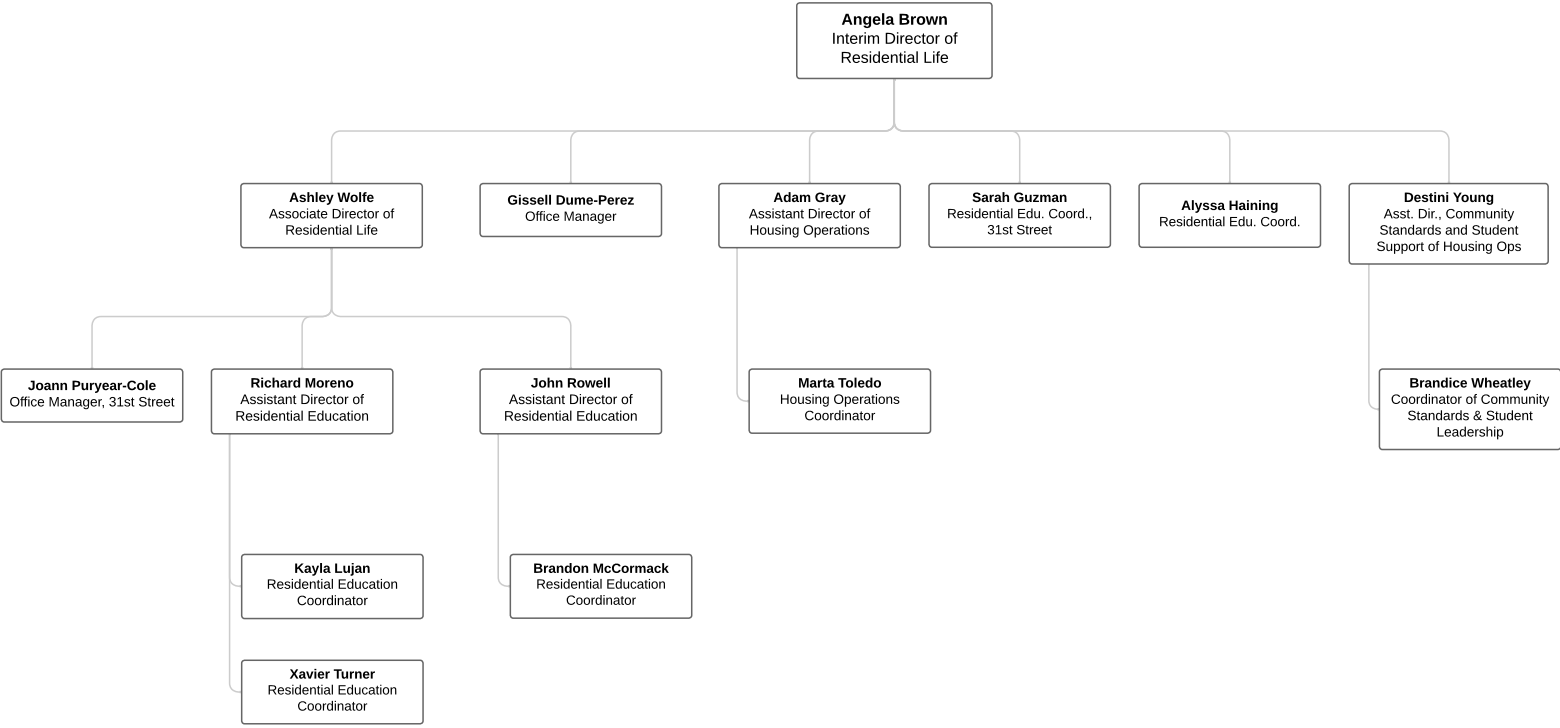
Enrollment Management  
and Student Success  
Health Services













**State University  
of New York**

Enrollment Management  
and Student Success  
Student Life

