

CET REPORTER

FIT Fashion Institute of Technology
Center for Excellence in Teaching

Center for Excellence in Teaching and the Teaching Institute

Great Minds Think *Differently*

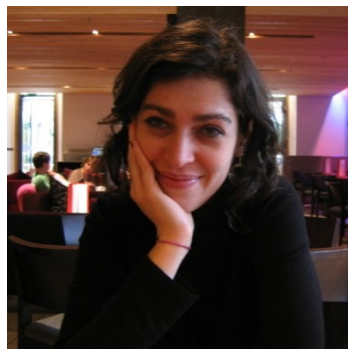
Introduction by
ELAINE MALDONADO

Recently, I was reading through my alumni magazine and came across an article on Cooper Union's project based learning. Although the article targeted engineering education, I couldn't help thinking that the author's comments were equally applicable to the teaching, learning and wide range of internships at FIT, especially with regard to fields such as textile development and marketing, international trade and marketing and design disciplines such as fashion, toy, home product and interior design. I knew the article would be of interest to the FIT faculty and posted it on the door to the CET. Soon after, we received a phone call from the author of the article. She is an FIT faculty member, Jasmine Gartner!

Jasmine has been kind enough to assist me with a brief abstract of the article, and I include it here for your interest.

Abstract of
JASMINE GARTNER'S article

Good colleges are strong proponents of project-based learning in the real world. The Cooper Union's engineering school is a perfect example of this: it is full of men and women who are confident that they can find solutions to help change the world. The issues that come up repeatedly are sustainability, security and improving the lives of others, whether through improved medical devices or more efficient ways of using energy. The engineering department's professors all have a focus on work that has an immediate and real impact on the world outside academia. The result is students who, upon graduation, are already prepared, through extensive experience, to actively take part in meeting the challenges of today's world. "As long as I can remember, these words have exemplified the FIT experience" said Elaine Maldonado.



Jasmine Gartner—Adjunct Faculty
Social Sciences Department

Teaching Institute Recipients:

Last month, the following faculty members were awarded funding through the Teaching Institute:

Celia Bergoffen, History of Art
Irene Buchman, Pres. Scholars
Praveen Chaudhry, Social Sciences
Juan DeLaCruz, Social Sciences
Michael Hyde, English & Speech
Desiree Koslin, Fashion & Textile
Joseph Maiorca, Social Sciences
Raymond Noonan, Health & Phys. Ed.
Emre Ozsoz, Social Sciences
Melissa Tombro, English & Speech
Michele Washington, Comm. Design
N. J. Wolfe, Gladys Marcus Library
Lisa Wolsky, Counseling Center
Michael Zartler, Social Sciences

Congratulations to all our recipients!

Angel's at FIT

By ELAINE MALDONADO
and CALVIN WILLIAMSON

The Angel migration is moving forward. Two College-wide Blackboard to Angel Information Sessions were held on September 20 and October 18. For Blackboard faculty

scheduled to begin using Angel in the spring 2008 semester, training began on October 26 with a one-day visit by guest trainer, Craig Lending (SUNY Brockport). Training for this group of faculty will continue through January. The second wave of faculty will be

invited to train during the spring and summer so that they will be prepared to use Angel in fall, 2008. At the present time, it is expected that FIT will not renew its Blackboard license. For this reason, it is important for all faculty to participate in Angel

Please see **ANGEL**, Page 2

Volume 2

November 2007

Teaching Institute Updates:

If you are interested in applying for funding through the TI, please note the following application deadline dates:

Fall 2007: September 17

November 5

Spring 2008: February 11

April 11

For more information, contact Celia Baez, 7-4064, or pick up an application in Room B502. The guidelines can also be downloaded at:
<http://www3.fitnyc.edu/cet/teachinginstitute.htm>

Calling all FIT Faculty Members:

Do you have something you would like to contribute to the CET Reporter? If so, please contact Celia Baez at X 7-4064, or email Celia_Baez@fitnyc.edu.

We look forward to hearing from you.



Craig Lending, Facilitator,
and Elaine Maldonado, CET

SUGGESTION BOX



We would like to know your ideas!

When you first enter the CET, there are three new additions. One is our large plasma screen to showcase faculty projects, a paper shredder to dispose of sensitive student material, and finally, a black and white checkered **Suggestion Box**. While we await the software to operate the plasma screen, the paper shredder and suggestion box are fully operational.

To date, we've received two anonymous suggestions. You asked for a spray cleaner and paper towels to keep the work stations and keyboards clean. This was a great idea! Even though we ask faculty not to eat or drink in the CET, someone inevitably has food and there's nothing worse for the rest of us than sitting down to a sticky keyboard. Therefore, located on the back bookcase is a container of Fantastic and a roll of paper towels.

Also, you requested we fix the squeaky front door. Fortunately, our new acting coordinator, Jeffrey, is quite tall. He was able to reach up and adjust the door jam so it didn't scrape along the tiles. A big thank you to Jeffrey since the door noise sounded like nails scraping along a chalk board.

We're also interested in ideas for new initiatives and innovative ways to further improve the services we deliver. We welcome your suggestions and ideas. Please keep them coming!

As we express our gratitude, we must never forget that the highest appreciation is not to utter words, but to live by them.

John Fitzgerald Kennedy

Angel's at FIT

ANGEL from page 1

training and/or workshops scheduled by the CET.

The migration for faculty teaching fully online is also underway. At the present time, four faculty members are conducting their course using Angel. The rest of the online faculty are training to teach their first courses in Angel for spring 2008. The training for online faculty is a day and a half and is being offered through the Office of Distance Learning.

Please check the CET [www3](http://www3.fitnyc.edu/cet) website (www3.fitnyc.edu/cet) for ongoing updates and new resources. If you have questions regarding the move from Blackboard or Course Studio to Angel, please contact Jeffrey Riman (X7-4063) or Elaine Maldonado (X7-4062) in the CET. If you are an on-line faculty member with questions about Angel, please contact the Office of Distance Learning (X7-4069) or Calvin Williamson (X7-7476).



Mario Pozada-Burga and Antonietta D'Amelio, Foreign Languages, attend Angel training.



The First Day of Angel Training
Jeffrey Riman, CET, Bernard Kahn, IT and Craig Lending, SUNY Brockport

FIT—ABLE at the CET



Liz Mortensen and Susan Altman, FIT-ABLE

By LIZ HOLLY MORTENSEN

There is no special admissions process for a student with a disability. Students with disabilities are held to the same standards as are other applicants and students. With this in mind, the Office of Disability Services (FIT-ABLE) offered a three-part series through the CET this

October to assist faculty gain insight into the laws which protect a student with a disability, faculty rights and responsibilities, demonstrations of assistive technology, and guest speakers from the International Dyslexia Association present on one of many types of learners in your audience as class.

We look forward to more informational workshops.



The CET staff wishes you
and your family a
Happy Thanksgiving!

